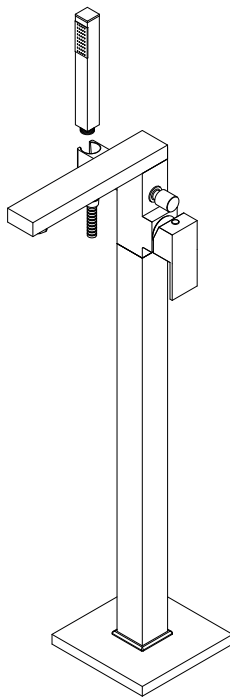


Installation Manual



Please keep this page for your online registration.

FIBTTBL04V2.0



WARNING

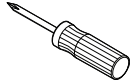


CAUTION

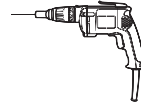
Flush all pipe work through before connecting the tap, debris in the pipe work can block the cartridge and lead to damage.

TOOLS

YOU MIGHT NEED



Screwdriver



Electric Drill



Adjustable Wrench

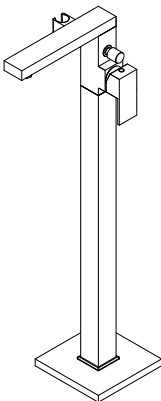


Hexagon wrench



CAUTION

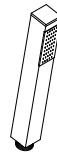
Please check you have all of these items in the box.



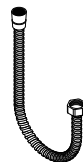
Body
X1



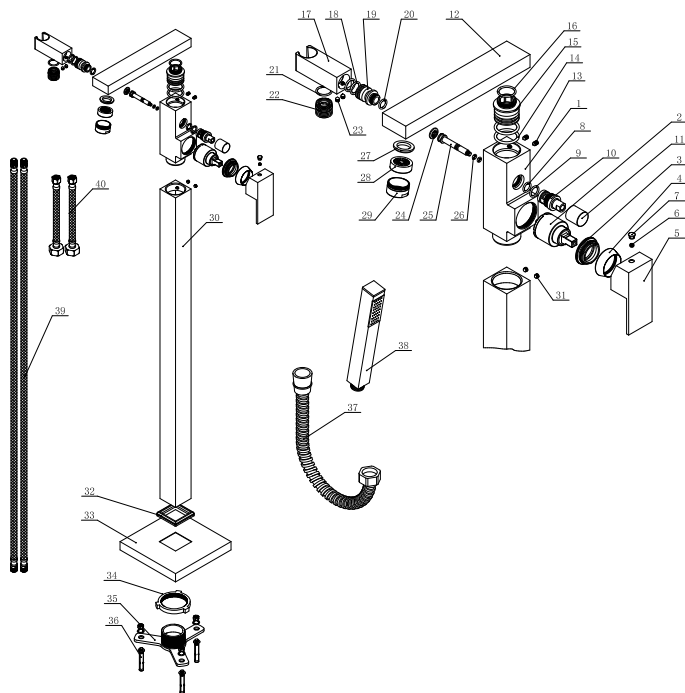
BOLT&NUT
X3



Handheld Shower
X1



Shower Hose
X1



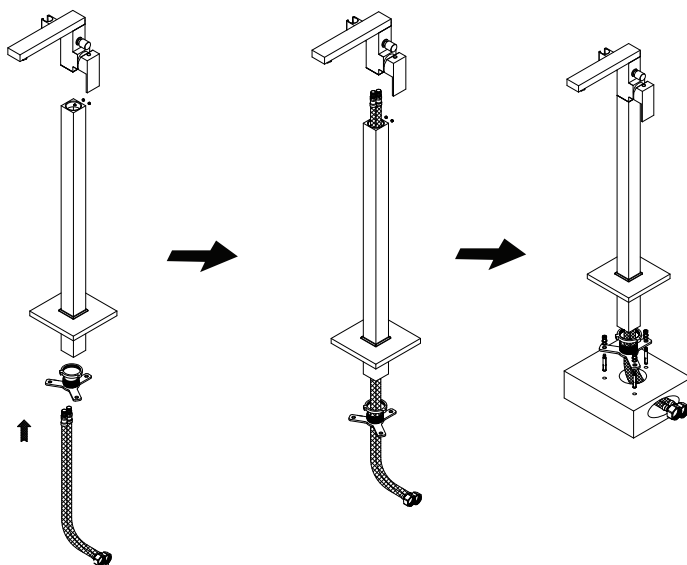
PART LIST

1	BODY	21	O RING
2	35MM CARTRIDGE	22	SCREW
3	PRESSING CAP	23	BOLT
4	PRESSING CAP COVER	24	WASHER
5	HANDLE	25	SPINDLE
6	BOLT	26	O RING
7	CHROME DOT	27	WASHER
8	O RING	28	AERATOR
9	O RING	29	HOUSE
10	DIVERTER HOUSE	30	STANDPIPE
11	DIVERTER CAP	31	BOLT
12	SPOUT	32	RUBBER
13	BOLT	33	BASE
14	O RING	34	LOCKING NUT
15	CONNECTOR	35	TRIANGLE BASE
16	O RING	36	BOLT
17	BRACKET	37	SS HOSE
18	O RING	38	HANDSHOWER
19	CONNECTOR	39	TAILS
20	O RING	40	TAILS

INSTALLATION PROCEDURE

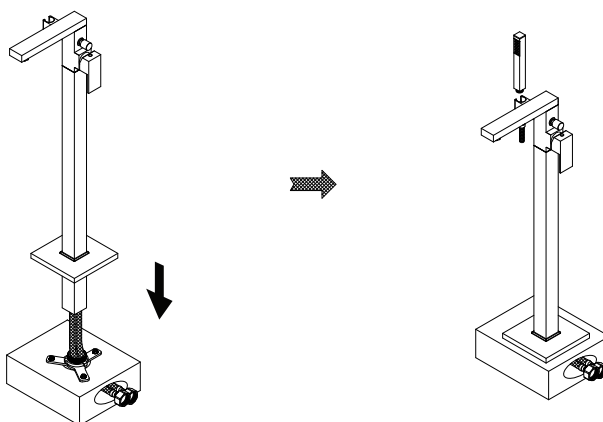
1

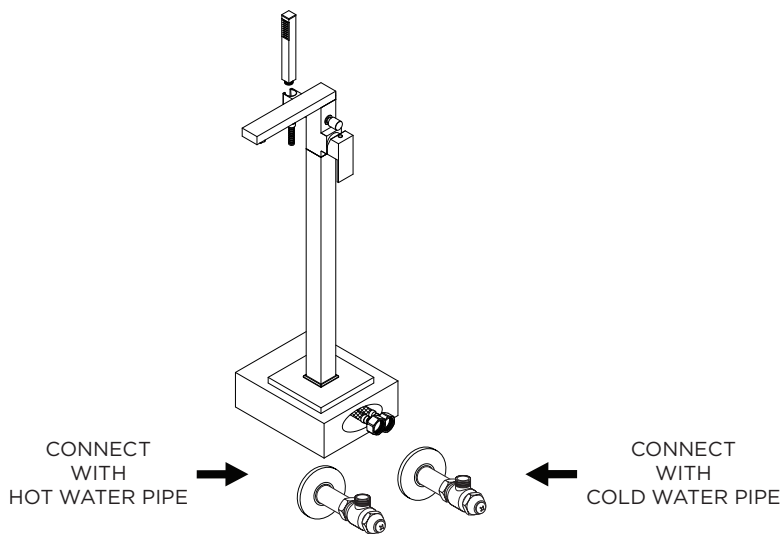
Drill three holes to assemble the base.



2

Put the base into cover the plate.





AFTER INSTALLATION

Ensure that all connections are tight. Ensure that the handle is in the off position. Turn on the drain and main water supply, and check for leaks. Repair as needed.

CARE & CLEANING

Your new tap is designed for years of trouble-free performance. Keep it looking new by cleaning it periodically with mild soap, rinse thoroughly with warm water and dry with a clean, soft cloth. Do not use abrasive cleaners, steel wool or harsh chemicals, as these will dull the finish. Failure to follow these instructions may void your warranty.

TROUBLE SHOOTING

If you've followed the instructions carefully and your tap still does not work properly, take these corrective steps.

Problem	Possible Cause	Solution
Insufficient water	- Aerator clogged	- Clean aerator, replace if necessary
Mixer stiff	- Cartridge defective	- Replace cartridge
Mixer dripping	- Cartridge defective	- Replace cartridge
Water leaks below handle	- Cartridge defective	- Replace cartridge
	- O-ring/rings defective	- Replace O-ring/rings
Water leaks at the connection	- Loose connection	- Tighten connection