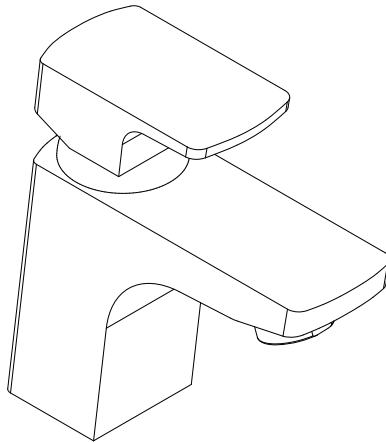


Installation Manual



Please keep this page for your online registration.

FIBTTBL03V1.0



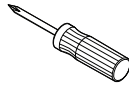
WARNING



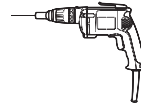
CAUTION

Flush all pipe work through before connecting the tap, debris in the pipe work can block the cartridge and lead to damage.

TOOLS YOU MIGHT NEED



Screwdriver



Electric Drill



Adjustable Wrench

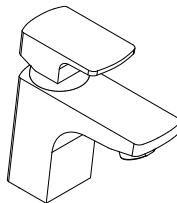


Hexagon wrench



CAUTION

Please check you have all of these items in the box.



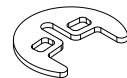
Body
X1



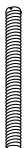
Fixing Nut
X2



Rubber Washer
X1



Metal Clamp
X1



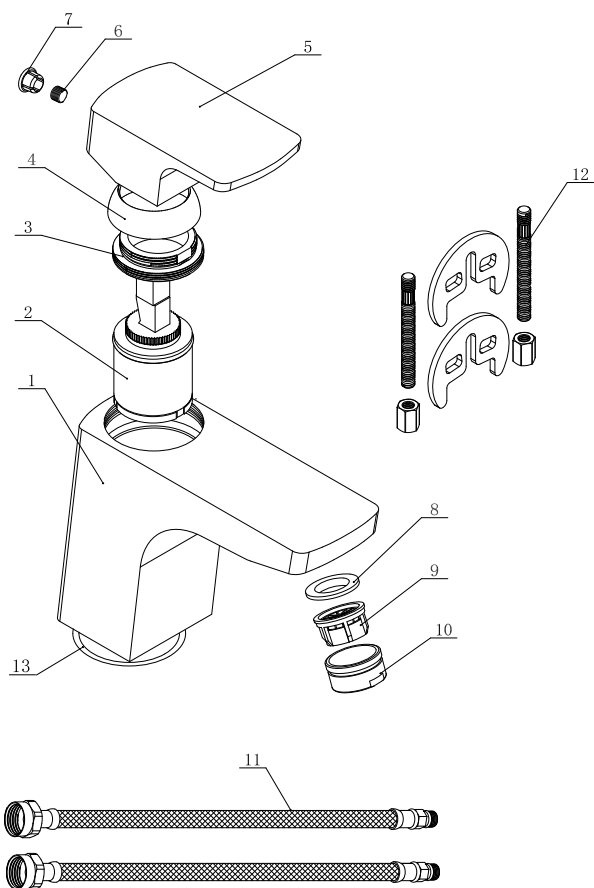
Threaded Bar
X2



Washer
X1



Flexible Tails
X2

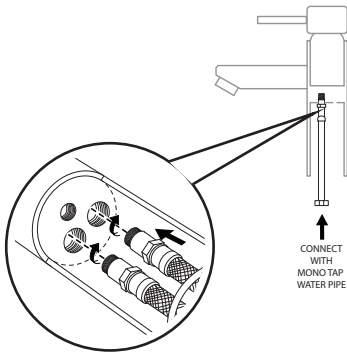


PART LIST

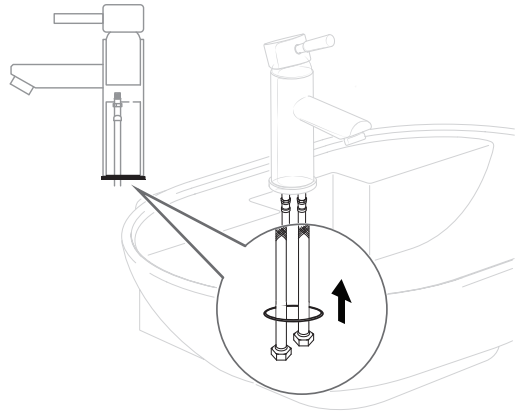
1	BODY	8	WASHER
2	CARTRIDGE	9	AERATOR
3	PRESSING CAP	10	HOUSE
4	PRESSING CAP COVER	11	TAILS
5	HANDLE	12	FIXING PACK
6	BOLT	13	O RING
7	COVER CAP	14	

INSTALLATION PROCEDURE

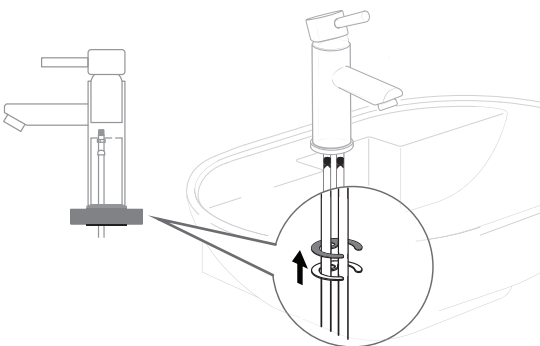
- 1** Fit the flexible tail hoses into the basin mixer body, making sure that you do not over tighten.



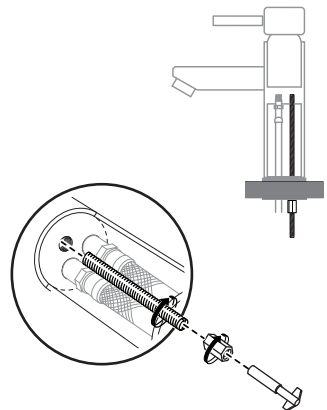
- 2** Make the flexible tails go through the bottom of basin mixer body.

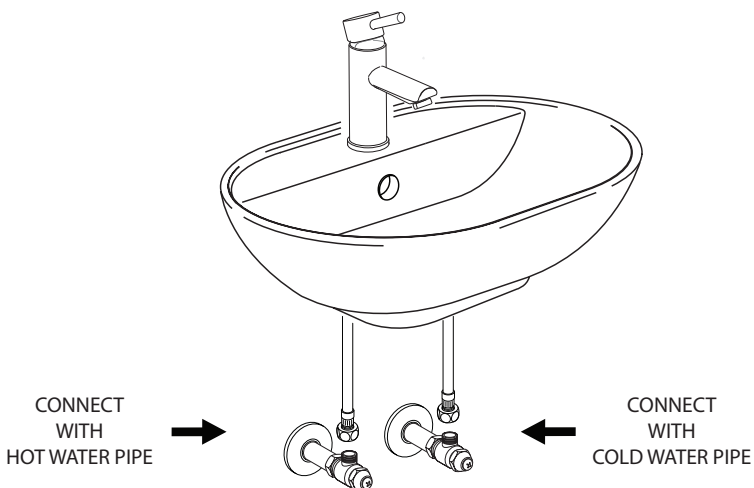


- 3** Fit the mixer body to the basin using the supplied rubber washer, metal bracket and locking nut.



- 4** Fix by screw.





AFTER INSTALLATION

Ensure that all connections are tight. Ensure that the handle is in the off position. Turn on the drain and main water supply, and check for leaks. Repair as needed.

CARE & CLEANING

Your new tap is designed for years of trouble-free performance. Keep it looking new by cleaning it periodically with mild soap, rinse thoroughly with warm water and dry with a clean, soft cloth. Do not use abrasive cleaners, steel wool or harsh chemicals, as these will dull the finish. Failure to follow these instructions may void your warranty.

TROUBLE SHOOTING

If you've followed the instructions carefully and your tap still does not work properly, take these corrective steps.

Problem	Possible Cause	Solution
Insufficient water	- Aerator clogged	- Clean aerator, replace if necessary
Mixer stiff	- Cartridge defective	- Replace cartridge
Mixer dripping	- Cartridge defective	- Replace cartridge
Water leaks below handle	- Cartridge defective	- Replace cartridge
	- O-ring/rings defective	- Replace O-ring/rings
Water leaks at the connection	- Loose connection	- Tighten connection