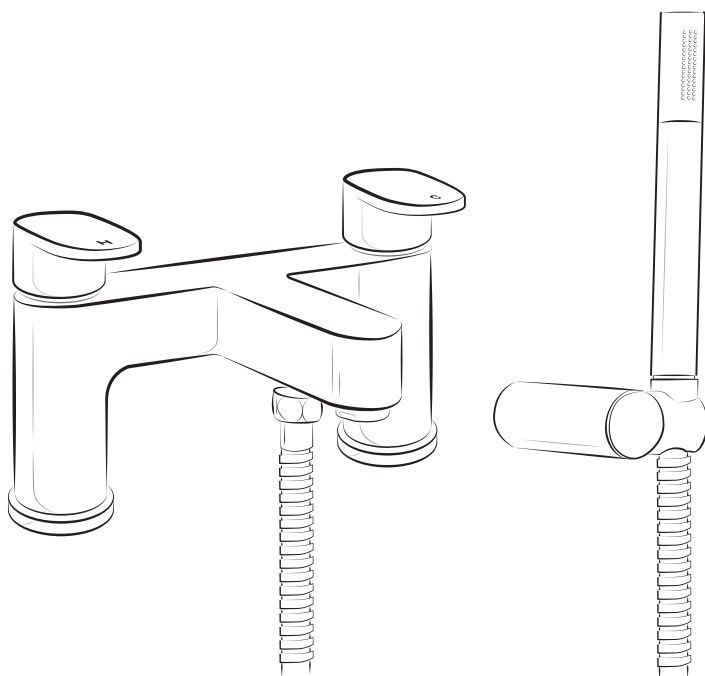


# Installation Manual



Apply for following models

12067/12068/12069/12070/12071

12072/12073/12074/12075/12076

12077/12078/12079/12080

Please keep this page for your online registration.

No. FIBTTBX02V1.0



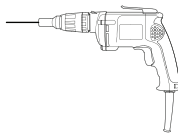
## WARNING



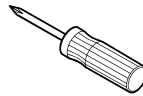
### CAUTION

If using solder for the installation of the tap; the tap seats, cartridges and washers will have to be removed before heating. Otherwise, the warranty will be voided on these parts.

## TOOLS YOU MIGHT NEED



Electric Drill



Screwdriver



Adjustable  
Wrench

## TECHNICAL DATA

Recommended water pressure: 7.25 - 43.5 psi

Max. Water pressure: 116 psi

Recommended hot water temp: 99.14 - 135.32 °F

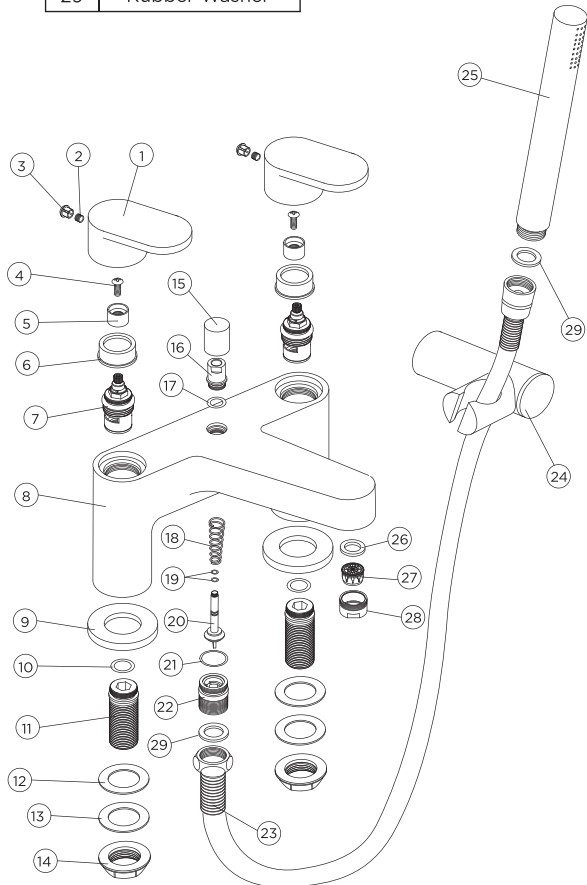
Max. Hot water temp: 164.84 °F

Please know and follow all applicable local plumbing codes when setting the temperature on the water heater.

## PARTS LIST

No.	Name
1	Handle
2	Handle Screw
3	Badge
4	Screw
5	Plastic Core
6	Cap
7	Cartridge
8	Tap Body
9	Round Base
10	O-Ring
11	1 Water Inlet Tube
12	Rubber Washer
13	Rubber Washer
14	Plastic Backnut
15	Divertor Cap
16	Connector
17	O-Ring
18	Spring

No.	Name
19	O-Ring
20	Divertor
21	O-Ring
22	Hose Connector
23	Flexible Hose
24	Holder
25	Showerhead
26	Washer
27	Aerator
28	Outlet Nozzle
29	Rubber Washer

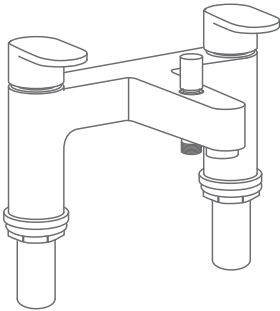


## BEFORE INSTALLATION

- ⌘ Observe all local plumbing codes.
- ⌘ Make sure water supply is turned off.
- ⌘ Read these instructions carefully to ensure proper installation.
- ⌘ Cover your drain to avoid losing parts.
- ⌘ Check to make sure you have the following parts indicated below.



Please check you have all of these items in the box.



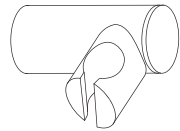
Body

**X1**



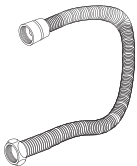
Showerhead

**X1**



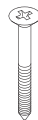
Holder

**X1**



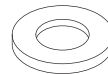
Flexible Hose

**X1**



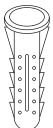
Screw

**X2**



Round Base

**X2**



Wall Plug

**X2**



Plastic  
Backnut

**X2**



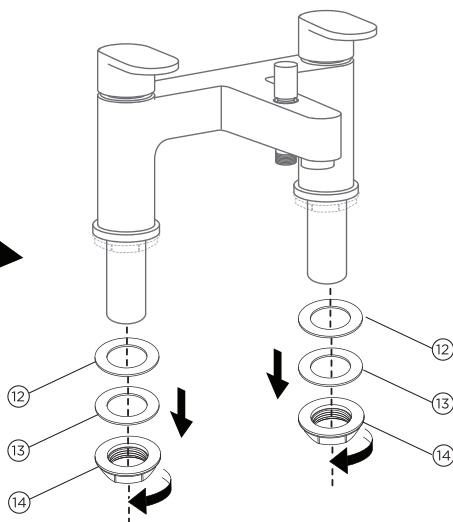
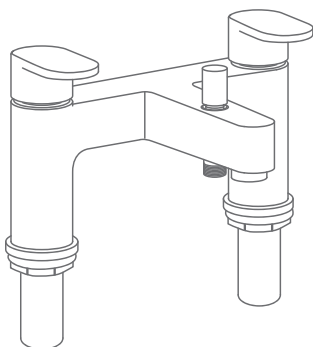
Flat Washer

**X2**

## INSTALLATION PROCEDURE

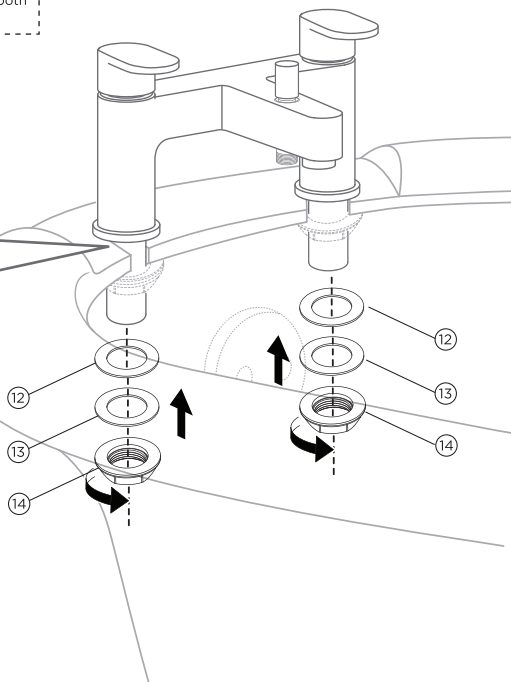
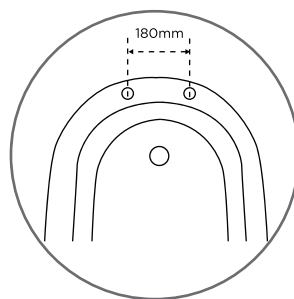
1

Remove the plastic backnut and washers from the water inlets.



2

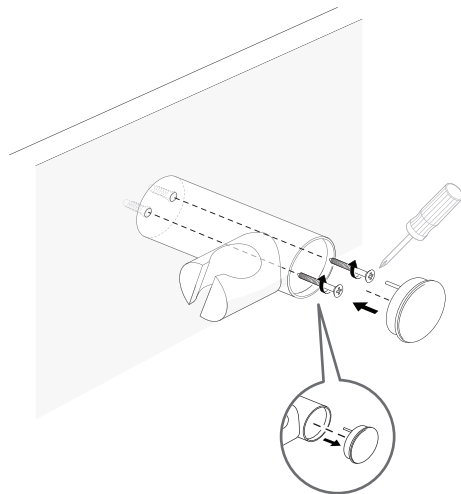
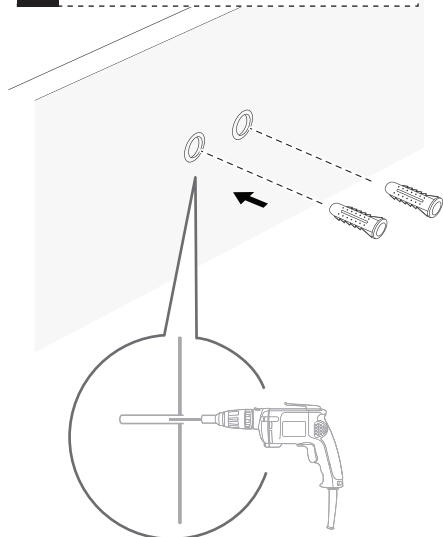
Carefully assemble fitting on to the bath, ensuring rubber washers or rubber cushions are in the place at the base of the fitting. Tighten the backnuts, ensuring equal torque is applied to both nuts.



## INSTALLATION PROCEDURE

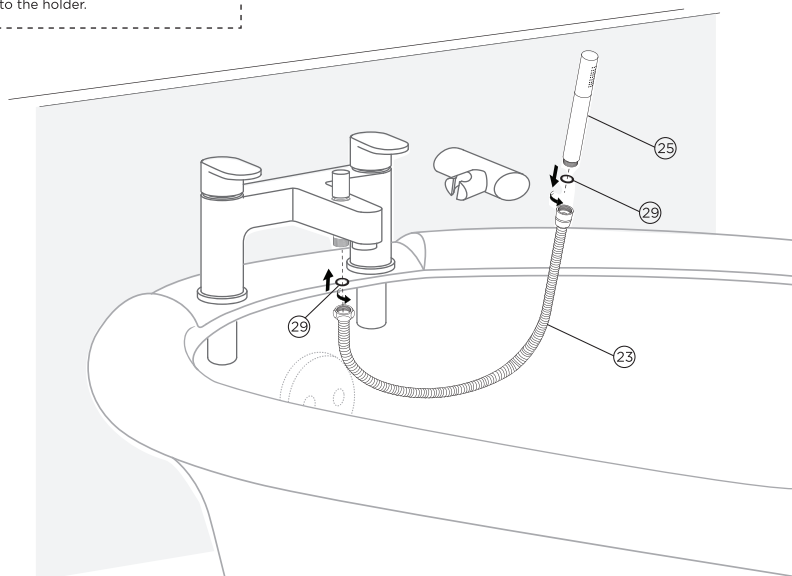
3

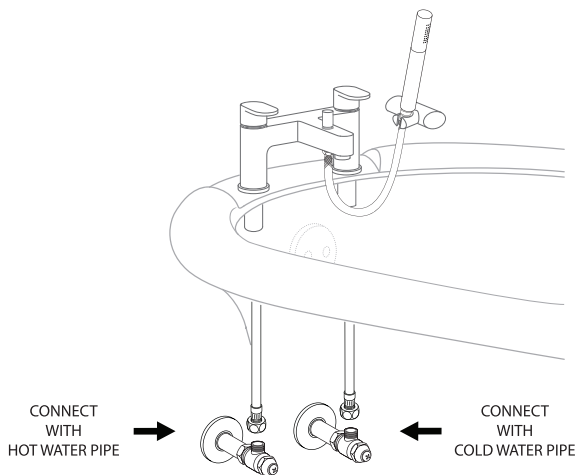
Take out the shower head holder. Remove the cap and mark wall in desired location. Drill holes, insert wall plugs and screw tight onto the wall. Then replace the cover caps.



4

Fit the flexible hose connector to the water outlet connector of tap body. Fit another connector of flexible hose to the showerhead, and then put the showerhead onto the holder.





## AFTER INSTALLATION

Ensure that all connections are tight. Ensure that the handle is in the off position. Turn on the drain and main water supply, and check for leaks. Repair as needed.

## CARE & CLEANING

Your new tap is designed for years of trouble-free performance. Keep it looking new by cleaning it periodically with mild soap, rinse thoroughly with warm water and dry with a clean, soft cloth. Do not use abrasive cleaners, steel wool or harsh chemicals, as these will dull the finish. Failure to follow these instructions may void your warranty.

## TROUBLE SHOOTING

If you've followed the instructions carefully and your tap still does not work properly, take these corrective steps.

Problem	Possible Cause	Solution
Insufficient water	- Aerator clogged	- Clean aerator, replace if necessary
Mixer stiff	- Cartridge defective	- Replace cartridge
Mixer dripping	- Cartridge defective	- Replace cartridge
Water leaks below handle	- Cartridge defective	- Replace cartridge
	- O-ring/rings defective	- Replace O-ring/rings
Water leaks at the connection	- Loose connection	- Tighten connection