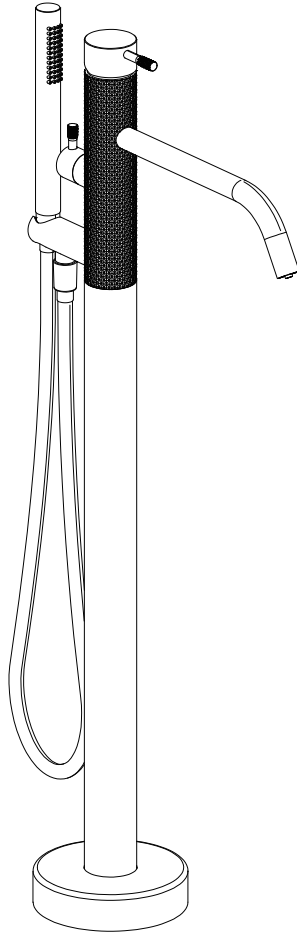


# Installation Manual



Apply for following models

**12227/12228/12229**

**12230/12231**

Please keep this page for your online registration.

No. FIBTBK04V1.0



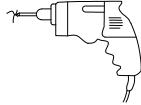
## WARNING



### CAUTION

If using solder for the installation of the tap; the tap seats, cartridges and washers will have to be removed before heating. Otherwise, the warranty will be voided on these parts.

## TOOLS YOU MIGHT NEED



Electric Drill



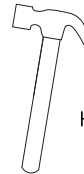
Wrench 24



Wrench 10



Pencil



Hammer

## TECHNICAL DATA

Recommended water pressure: 14.5 - 72.52 psi

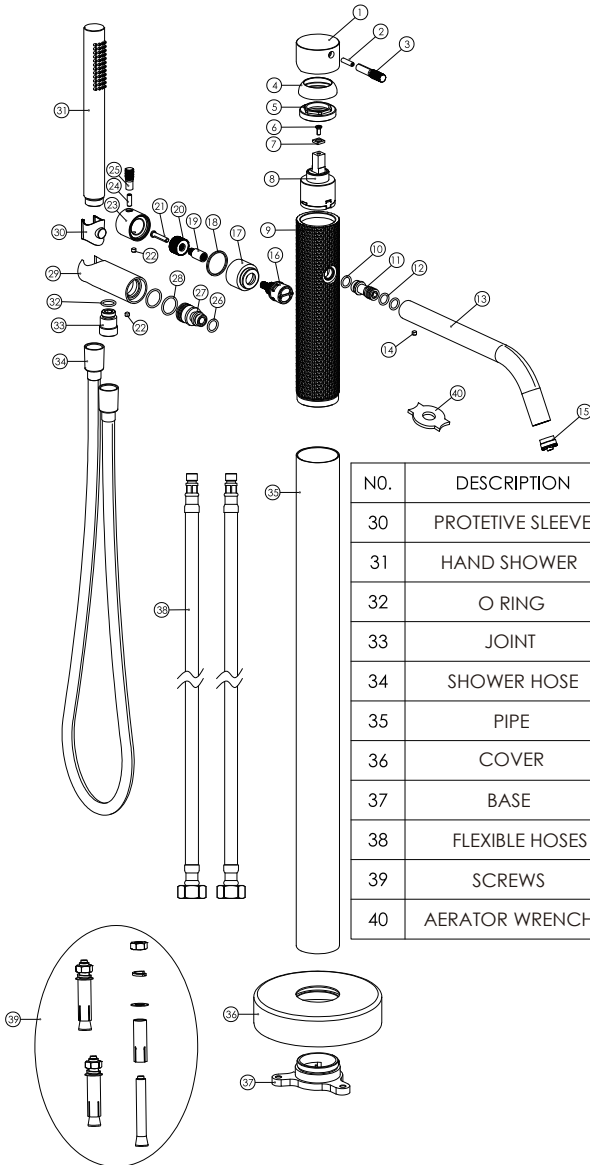
Max. Water pressure: 145 psi

Recommended hot water temp:  $\leq 149^{\circ}\text{F}$

Max. Hot water temp:  $194^{\circ}\text{F}$

Please know and follow all applicable local plumbing codes when setting the temperature on the water heater.

## PARTS LIST



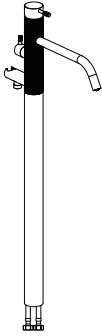
NO.	DESCRIPTION
1	HANDLE BODY
2	SCREW
3	HANDLE BAR
4	COVER
5	NUT
6	SCREW
7	GASKET
8	CARTRIDGE
9	PIPE
10	O RING
11	JOINT
12	O RINGS
13	SPOUT
14	SCREW
15	AERATOR
16	DIVERTER CARTRIDGE
17	CARTRIDGE COVER
18	O RING
19	CONNECT BAR
20	GEAR SLEEVE
21	SCREW
22	SCREW
23	HANDLE BODY
24	SCREW
25	HANDLE BAR
26	O RING
27	JOINT
28	O RINGS
29	SHOWER HOLDER
30	PROTECTIVE SLEEVE
31	HAND SHOWER
32	O RING
33	JOINT
34	SHOWER HOSE
35	PIPE
36	COVER
37	BASE
38	FLEXIBLE HOSES
39	SCREWS
40	AERATOR WRENCH

## BEFORE INSTALLATION

- ⌘ Observe all local plumbing codes.
- ⌘ Make sure water supply is turned off.
- ⌘ Read these instructions carefully to ensure proper installation.
- ⌘ Cover your drain to avoid losing parts.
- ⌘ Check to make sure you have the following parts indicated below.



Please check you have all of these items in the box.



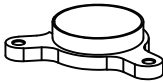
Body  
**X1**



Hand Shower  
**X1**



Shower Hose  
**X1**



Base **X1**



Cover **X1**



Washer **X2**



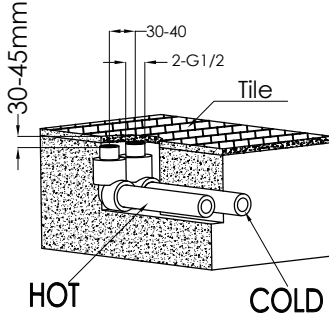
Screw **X3**

## INSTALLATION PROCEDURE

1

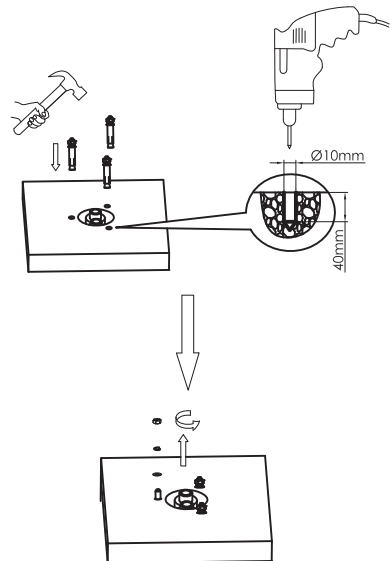
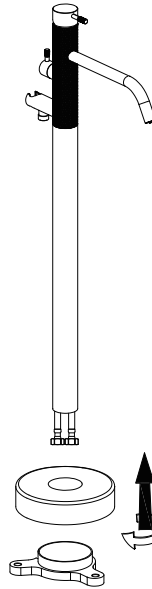
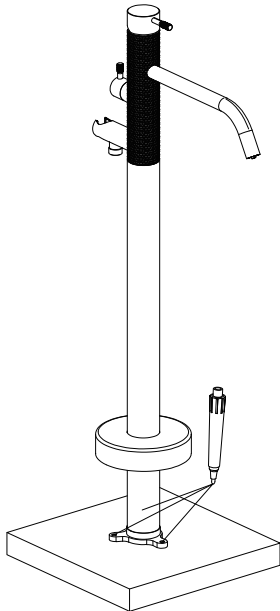
Slide the decorative cover over the product pipe. Screw the base onto the pipe threads.

Including the thickness of tile



2

Mark the installation position, drill holes, and insert plugs. Unscrew the mounting nuts from the bolts.



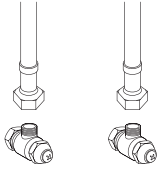
## INSTALLATION PROCEDURE

3

Connect the flexible hoses to pipes, secure the product base to the floor with the bolts, then tighten the mounting nuts.



Before connecting to the mains any new pipework should be flushed through to remove any debris that may clog the cartridge in the tap.

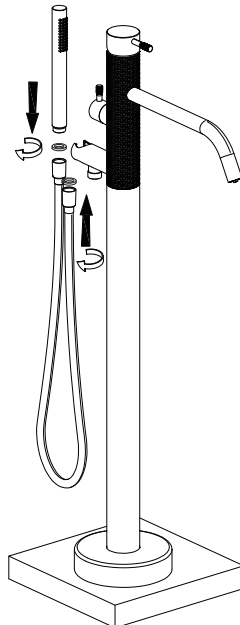
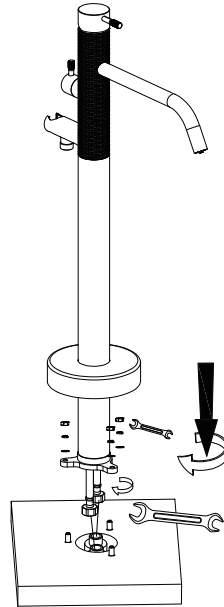


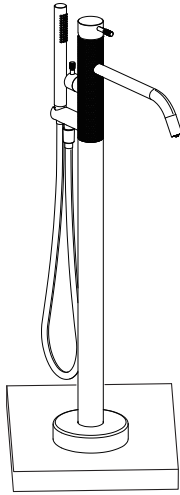
↑  
CONNECT  
WITH  
HOT WATER PIPE

↑  
CONNECT  
WITH  
COLD WATER PIPE

4

Connect the shower hose to the hand shower and the product, put washers at both ends.





## AFTER INSTALLATION

Ensure that all connections are tight. Ensure that the handle is in the off position. Turn on the drain and main water supply, and check for leaks. Repair as needed.

## CARE & CLEANING

Your new tap is designed for years of trouble-free performance. Keep it looking new by cleaning it periodically with mild soap, rinse thoroughly with warm water and dry with a clean, soft cloth. Do not use abrasive cleaners, steel wool or harsh chemicals, as these will dull the finish. Failure to follow these instructions may void your warranty.

## TROUBLE SHOOTING

If you've followed the instructions carefully and your tap still does not work properly, take these corrective steps.

<b>Problem</b>	<b>Possible Cause</b>	<b>Solution</b>
Insufficient water	- Aerator clogged	- Clean aerator, replace if necessary
Mixer stiff	- Cartridge defective	- Replace cartridge
Mixer dripping	- Cartridge defective	- Replace cartridge
Water leaks below handle	- Cartridge defective	- Replace cartridge
	- O-ring/rings defective	- Replace O-ring/rings
Water leaks at the connections hose	- Connection hose defective	- Replace connection hose
	- O-ring at the connection hose defective	- Replace O-ring
	- Cartridge adapter defective	- Replace cartridge adapter
	- Cartridge adapter O-ring defective	- Replace O-ring