

# Installation Manual

**Apply for all cabinets.**

Please keep this page for your online registration.

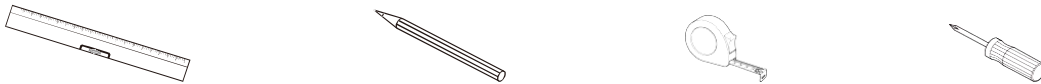
FIFUMCO01V3.0



## Important Notes — Before drilling

- Place the product in a well-ventilated environment to prevent oxidation due to long-term humidity.
- Check for any hidden cables or pipes in the wall.
- Measure the distance between the "top mounting holes" and "bottom mounting holes" from the back of the unit before drilling.
- Use a ceramic drill bit if drilling through tile.
- If uncertain about the appropriate wall plugs for your wall, consult a professional or qualified tradesperson.
- Do not use nails to mount the cabinet.
- If the wall surface has irregularities, it might cause distortion of the cabinet body when mounted. Use shims between the cabinet and wall if necessary.
- Do not use any detergent while cleaning the cabinet. Such as: abrasive cleaning powders, steel wool or scourers. Including the detergent with acetone, chlorine and thinners, etc.
- For the battery product, batteries will not be provided for transportation safety reason.

You will need the tools below to assemble the products (Tools not provided).



## I Preparing the Cabinet

1. Gently unpack the cabinet, setting aside the hardware package and doors for later use.

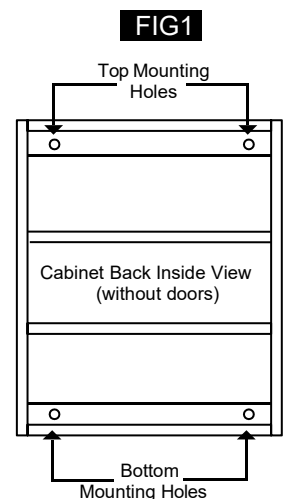
## II Determining the Installation Location

1. The recommended height for mirror cabinets is 64 inches from the finished floor to the center of the mirror area. However, adjust this height to fit your personal preference.
2. For the highest stability, attach the cabinet directly to the wall studs.

## III Mounting the Cabinet

**NOTE: We recommended getting assistance from one or two others to simplify the installation process.**

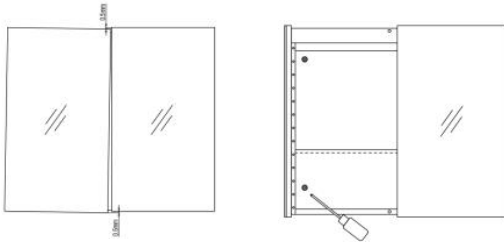
1. Measure and mark four mounting holes on the wall, aligning with the pre-drilled hole locations in the cabinet's mounting bars located on the inside back panel.
2. (FIG1) Draw horizontal lines connecting the top two and bottom two marks, ensuring they are level. Repeat this process for the vertical lines connecting the left and right marks. Ensure the marks are level, and that the cabinet's mounting holes align with the marked locations on the wall.
3. Drill 1/4" diameter holes at the marked locations on your wall. If these holes do not align with a stud, increase the hole diameter to fit wall anchors. Position these anchors as necessary.
4. Position the cabinet in place and ensure it's level.
5. Secure the cabinet to the wall using the four mounting screws provided in the hardware pack.



## IV Door Adjustment

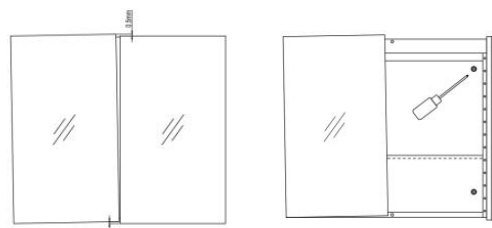
**NOTE: This step applies only if the cabinet's mirror doors are uneven by up to 0.5mm.**

1)



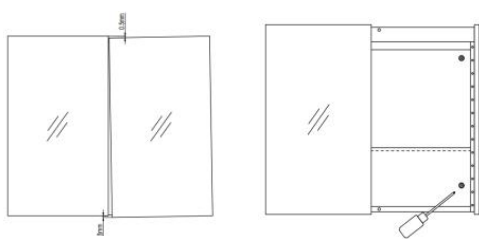
If the left door is lower than the right, slightly loosen the installation screws on the inclined door by 0.5-1mm.

2)



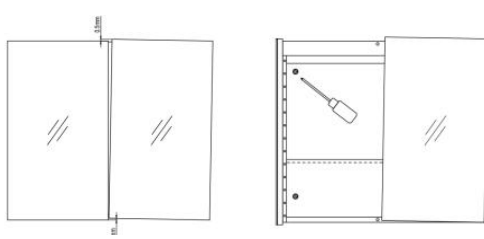
If the left door is higher than the right, slightly loosen the installation screws on the right door by 0.5-1mm.

3)



If the right door is lower than the left, slightly loosen the installation screws on the inclined door by 0.5-1mm.

4)



If the right door is higher than the left, slightly loosen the installation screws on the left door by 0.5-1mm.