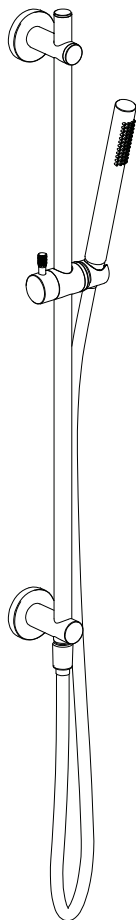


Installation Manual



Apply for following models

23074,23075,23076,23077,23078

Please keep this page for your online registration.

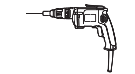
No. FISHTBK05V1.0



TECHNICAL DATA

	Scope of Use	Recommended Range	Proper Use
Dynamic Pressure(bar)	Min 1bar	$1\text{bar} \leq P \leq 5\text{bar}$	
Static Pressure(bar)	Max 10bar	--	
Hot Water Temperature(°C)	$T \leq 90^{\circ}\text{C}$	$55^{\circ}\text{C} \leq T \leq 65^{\circ}\text{C}$	
Cold Water Temperature(°C)	$T \leq 25^{\circ}\text{C}$	$T \leq 25^{\circ}\text{C}$	

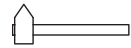
TOOLS YOU MIGHT NEED



Electric Drill



Drill Bit



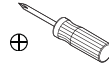
Hammer



Tape Measure



Pencil



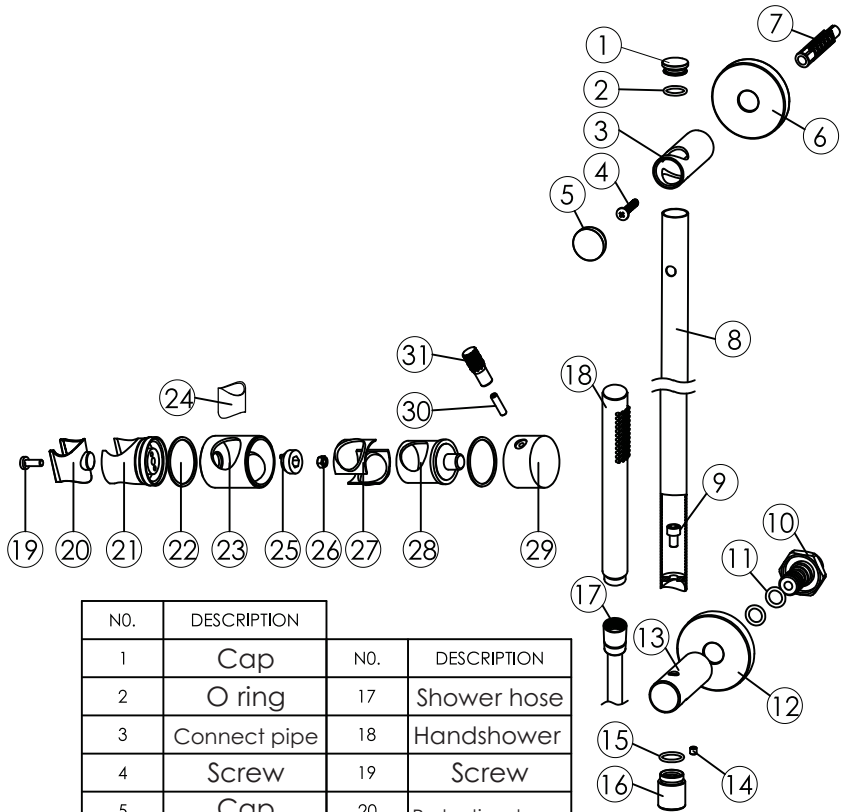
Cross Head
Screwdriver



Allen Key



PTFE Tape



NO.	DESCRIPTION	NO.	DESCRIPTION
1	Cap	17	Shower hose
2	O ring	18	Handshower
3	Connect pipe	19	Screw
4	Screw	20	Protective sleeve
5	Cap	21	Shower holder
6	Cover	22	O ring
7	Wall plug	23	Wall plug
8	Sliding bar	24	Protective sleeve
9	Screw	25	Screw
10	Water inlet	26	Nut
11	O rings	27	O rings
12	Cover	28	Adjustable cap
13	Connect pipe	29	Handle
14	Screw	30	Screw
15	O ring	31	Handle bar
16	Joint		

INTRODUCTION

WARNING

Before installing the new mixer it is essential that you thoroughly flush through the supply pipes in order to remove any remaining swarf, solder or other impurities.

Failure to carry out this simple procedure could cause problems or damage to the workings of the mixer.

These hints have been prepared for your guidance, you must exercise due care at all times. We do not accept responsibility for any problems that may occur through incorrect installation.

This product should only be fitted by a qualified plumber to NVQ (National Vocational Qualification) or SNVQ (Scottish National Vocational Qualification) Level 3. Should the installation be completed by a non-qualified person then the guarantee may be considered invalid.

For a claim made under our warranty written certification of your installers credentials can be required. For further information or to find a qualified installer in your area please visit the Institute of Plumbers website - www.ciphe.org.uk

CLEANING

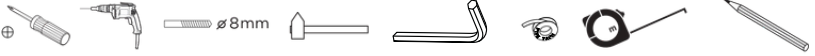
CARE OF YOUR SHOWER VALVE

We recommend cleaning the valve with a soft damp cloth.

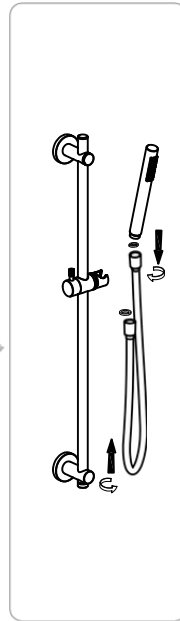
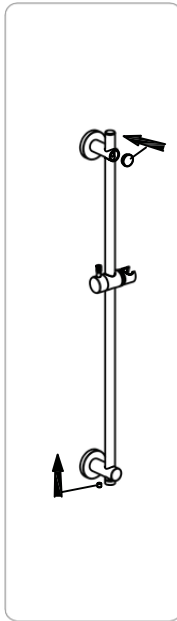
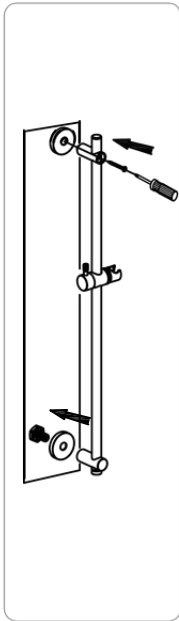
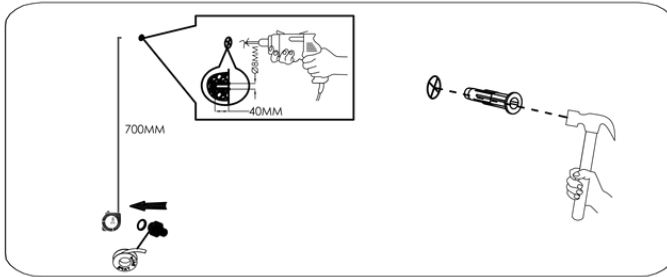
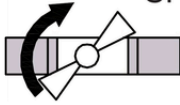
We strongly advise against the use of ALL cleaning products

INSTALLATION PROCEDURE

1



SHUT INLET VALVE



OPEN INLET VALVE

