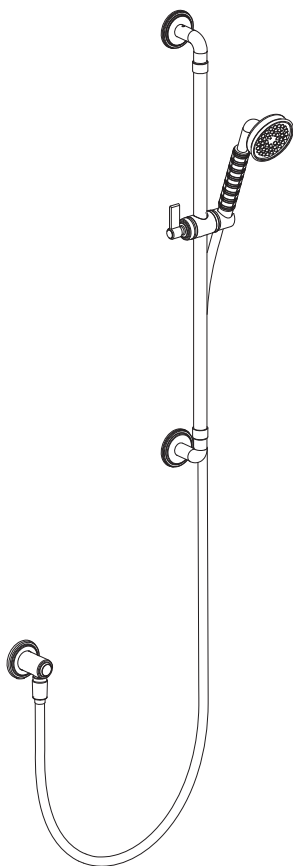


Installation Manual



Apply for following models

23085/23086/23087

Please keep this page for your online registration.

No. FISHTBK11V1.0



TECHNICAL DATA

	Scope of Use	Recommended Range	Proper Use
Dynamic Pressure(bar)	Min 1bar	$1\text{bar} \leq P \leq 5\text{bar}$	
Static Pressure(bar)	Max 10bar	--	
Hot Water Temperature(°C)	$T \leq 90^{\circ}\text{C}$	$55^{\circ}\text{C} \leq T \leq 65^{\circ}\text{C}$	
Cold Water Temperature(°C)	$T \leq 25^{\circ}\text{C}$	$T \leq 25^{\circ}\text{C}$	

TOOLS YOU MIGHT NEED



Tape Measure



Allen Key



Electric Drill



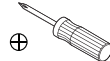
Pencil



PTFE Tape



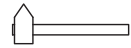
Drill Bit



Cross Head
Screwdriver



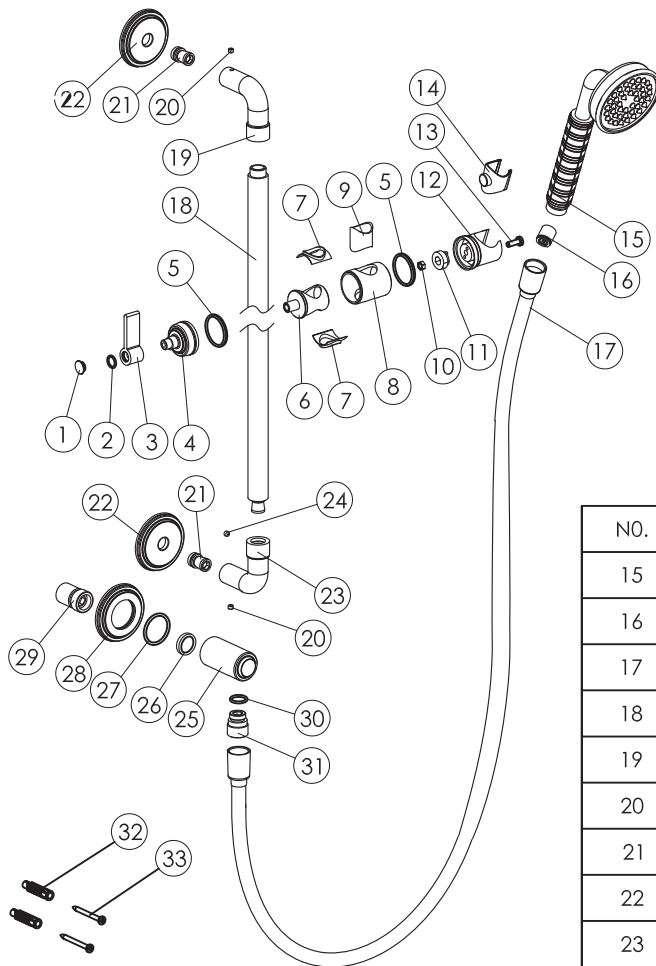
Adjustable
Wrench



Hammer



Spirit Level



NO.	DESCRIPTION
15	Hand shower
16	Check valve
17	Shower hose
18	Sliding bar
19	Connect pipe
20	Screw
21	Joint
22	Wall cover
23	Connect pipe
24	Screw
25	Connect pipe Sealing gasket Wall cover

NO.	DESCRIPTION	NO.	DESCRIPTION	NO.	DESCRIPTION
1	Cap	8	Removable body	26	
2	O ring	9	Protective sleeve	27	
3	Handle	10	Nut	28	
4	Handle body	11	Sliding seat	29	Joint
5	O ring	12	Shower holder	30	O ring
6	Adjustable body	13	Screw	31	Joint
7	Protective sleeves	14	Protective sleeve	32	Wall plugs
				33	Screws

INTRODUCTION

WARNING

Before installing the new mixer it is essential that you thoroughly flush through the supply pipes in order to remove any remaining swarf, solder or other impurities.

Failure to carry out this simple procedure could cause problems or damage to the workings of the mixer.

These hints have been prepared for your guidance, you must exercise due care at all times. We do not accept responsibility for any problems that may occur through incorrect installation.

This product should only be fitted by a qualified plumber to NVQ (National Vocational Qualification) or SNVQ (Scottish National Vocational Qualification) Level 3. Should the installation be completed by a non-qualified person then the guarantee may be considered invalid.

For a claim made under our warranty written certification of your installers credentials can be required. For further information or to find a qualified installer in your area please visit the Institute of Plumbers website - www.ciphe.org.uk

CLEANING

CARE OF YOUR SHOWER VALVE

We recommend cleaning the valve with a soft damp cloth.

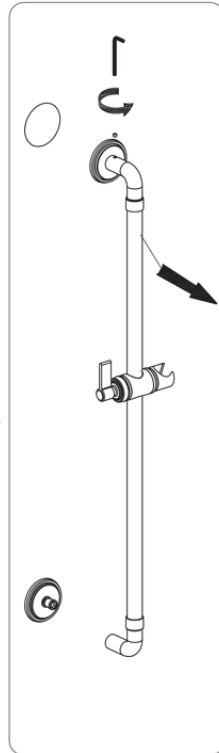
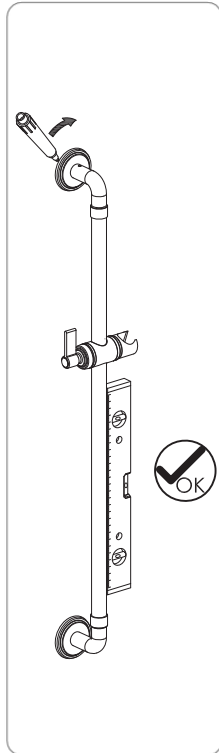
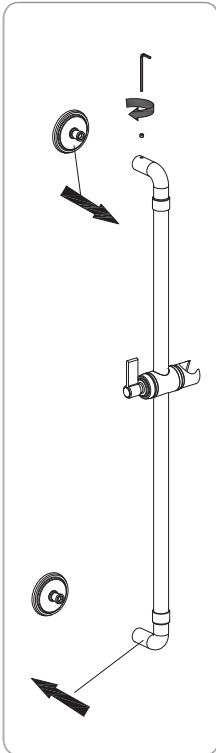
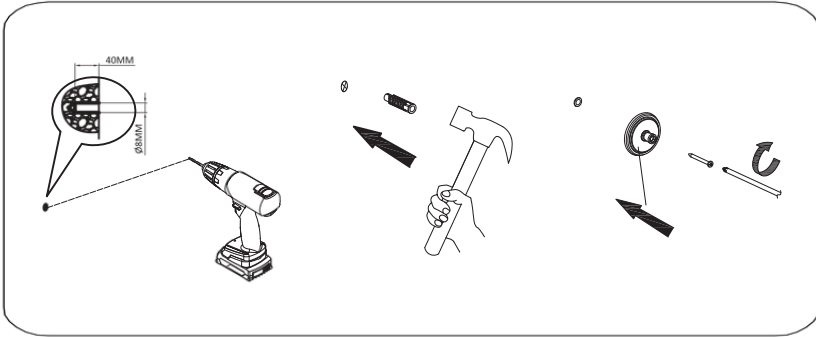
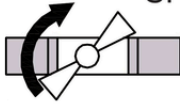
We strongly advise against the use of ALL cleaning products

INSTALLATION PROCEDURE

1

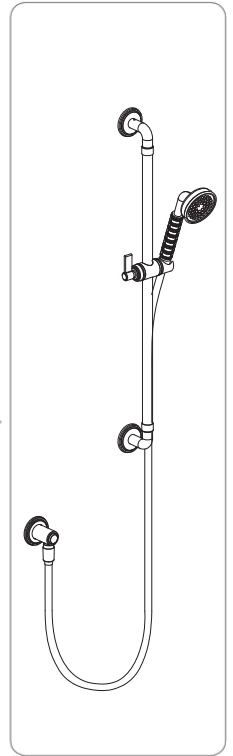
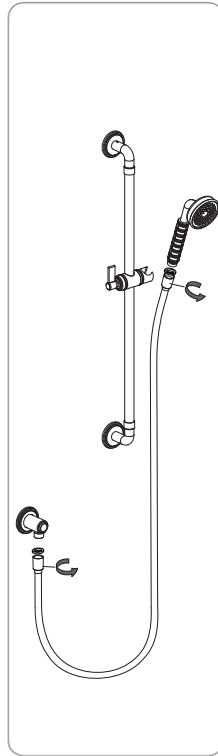
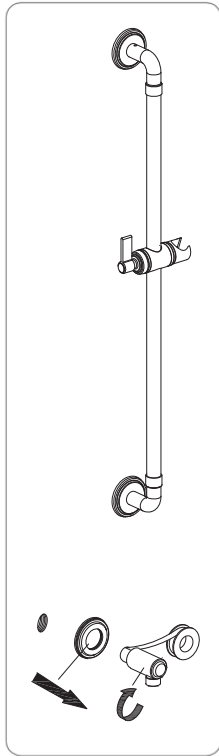
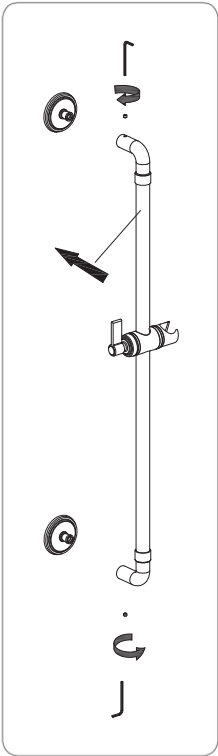
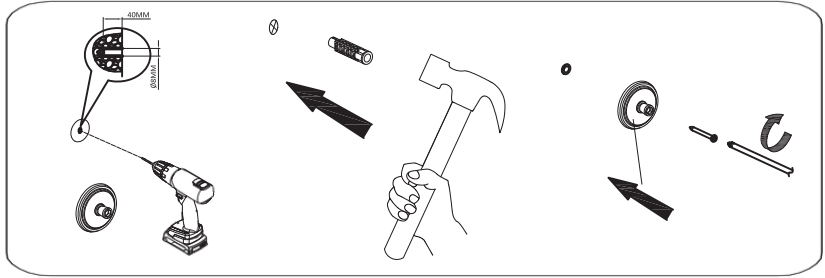


SHUT INLET VALVE



INSTALLATION PROCEDURE

2



OPEN INLET VALVE

