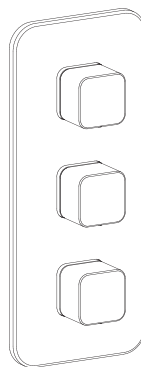
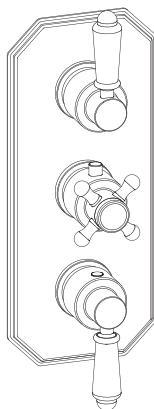
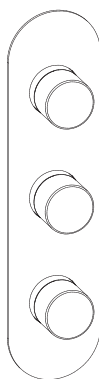
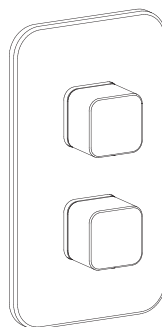
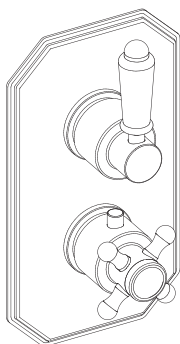
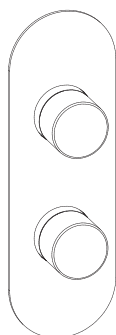


Installation Manual



Apply for following models

**21043/21044/21045/21046/21047
21048/21049/21050/21051/21052
21053/21054/21055/21056/21057**

Please keep this page for your online registration.

No. FISVTBX04V1.0



INSTALLATION INSTRUCTIONS

Important

- We recommend that this product is installed by a qualified professional plumber who is certified by NVQ (National Vocational Qualification) or SNVQ (Scottish National Vocational Qualification) Level 3.
- Please check this product upon delivery to ensure that it has not been damaged and is complete.
- Before installation, please make sure this product is the correct model and you have all the parts required for installation and use.
- If possible the valve should be supplied with hot and cold water at balanced pressure.
- It is important to flush the water system to ensure that no swarf, solder, or any other impurity or foreign body can enter the valve.
- Turn off the water supply before commencing work, this should be done at the isolating valves or inlet feeds if fitted, or otherwise at the main stopcock.
- Please read these instructions carefully and keep them for future reference.

TECHNICAL DATA

Conditions of use for thermostatic mixing valve.

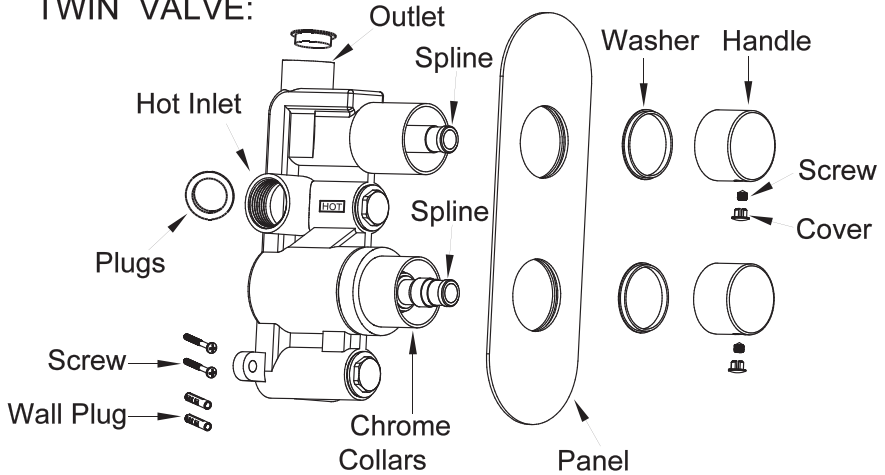
Low Pressure

Max static pressure(Bar)	10
Flow Pressure,Hot&Cold(Bar)	0.1-1.0
Hot Supply Temperature(℃)	55-65
Cold Supply Temperature(℃)	Equal to or less than 25

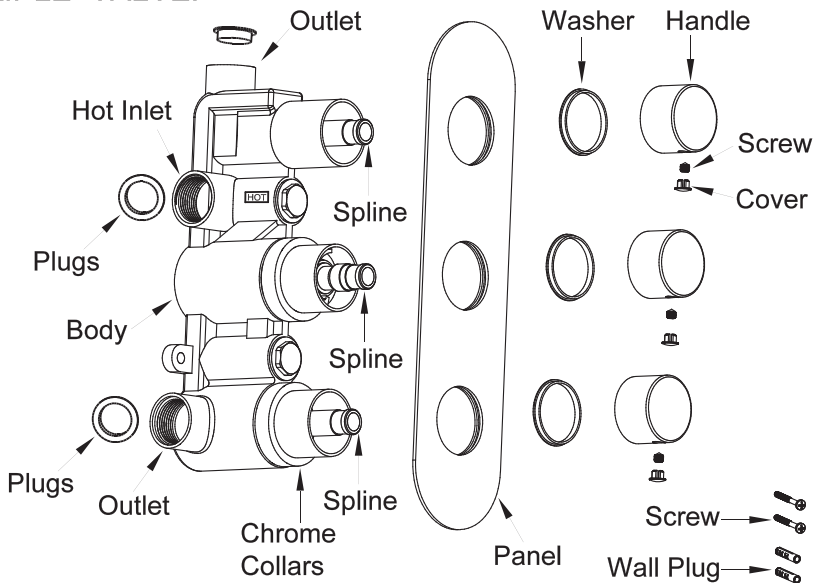
The British Burns Association recommends 37 to 37.5℃ as a comfortable bathing temperature for children. In premises covered by the Care Standards Act 2000, the maximum mixed water outlet temperature is 43℃.

COMPONENTS

TWIN VALVE:

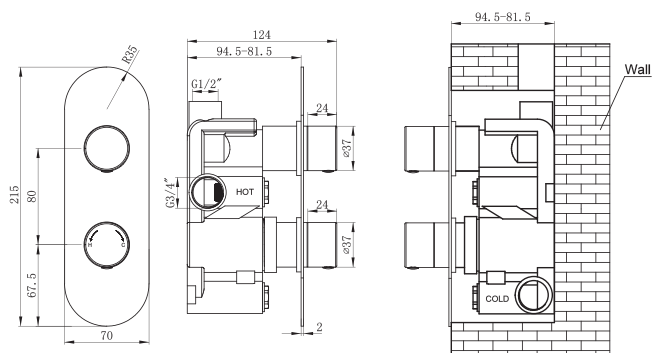


TRIPLE VALVE:

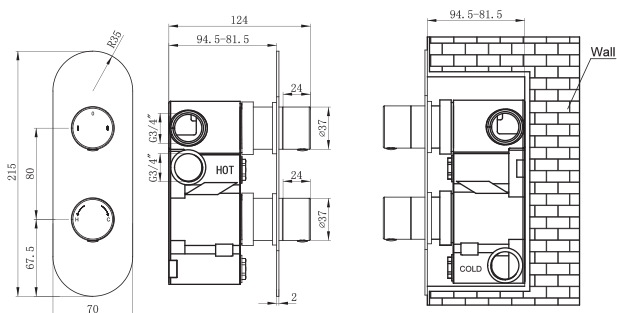


DIMENSIONS

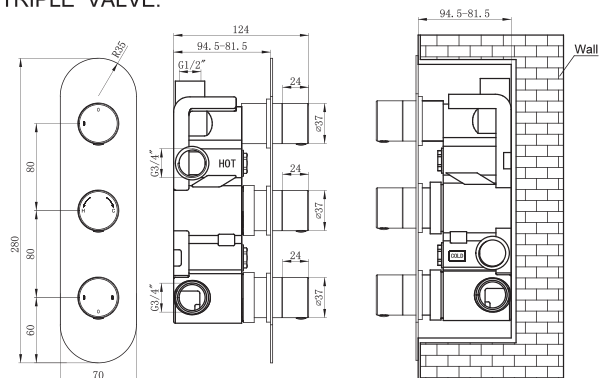
TWIN VALVE:



TWIN VALVE:



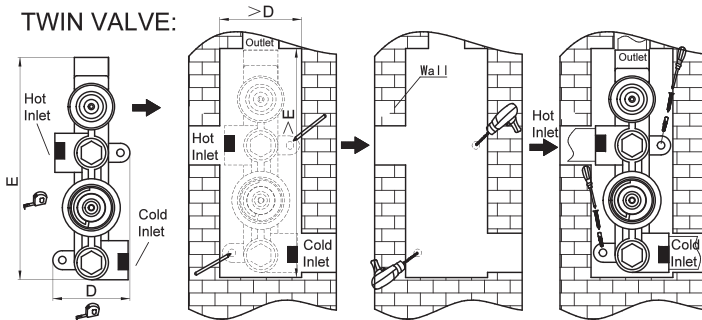
TRIPLE VALVE:



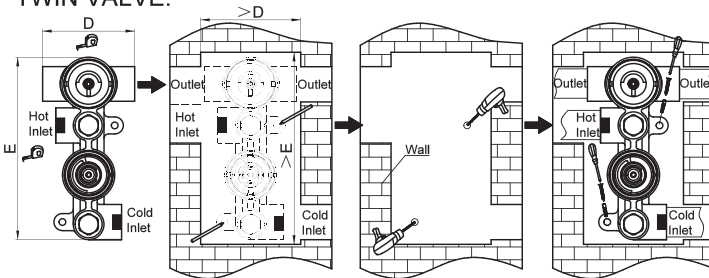
INSTALLATION PROCEDURE

1. Determine the fixing position for the valve. Make a recess in the wall according to the dimension of the shower valve and mark required installation holes and sizes. Drill those holes with plastic plugs into them. Connect the inlet and outlet to the correct pipework with necessary sealant. Screw the shower valve body in position, using the mounting lugs that are cast into the base of the body.

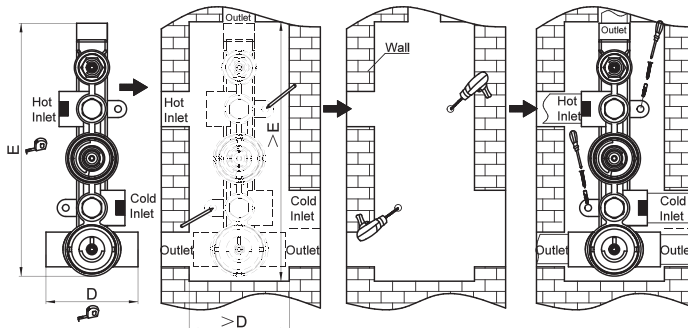
TWIN VALVE:



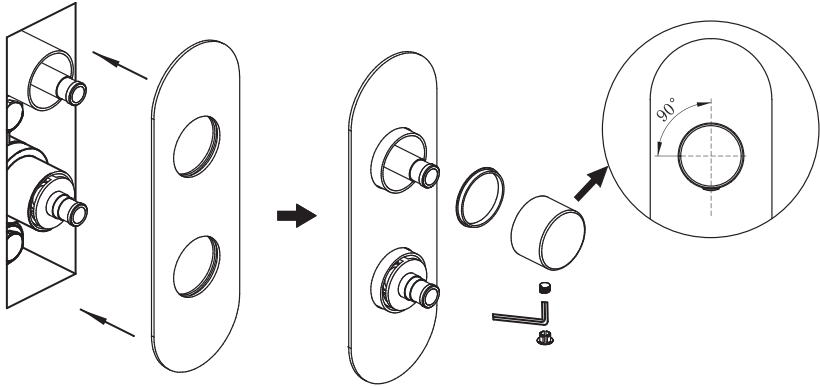
TWIN VALVE:



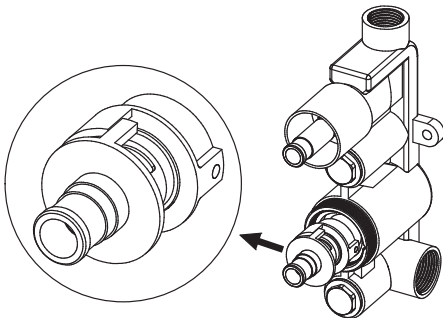
TRIPLE VALVE:



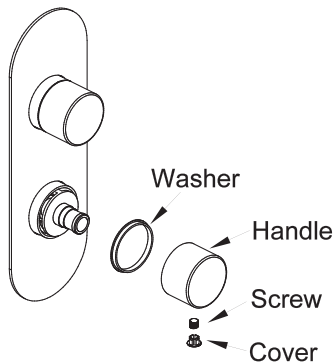
2. Marked secure the concealing plate onto the valve body which is clearly marked. Then fit the rubber washer, cover body, grub screw and hand lever.



3. Factory outlet setting temperature is 42°C when face A aligns the align mark on the cartridge. Do not turn the spindle in case of any movement, which will result in an incorrect factory outlet temperature 42°C. If this is the case, please as shown below re-align.



4.Assemble the washer and handle onto the valve body according to the drawing below, tighten the handle with the screw and put the cover onto the handle.



5.YOUR SHOWER VAVLES IS NOW READY FOR USE.

