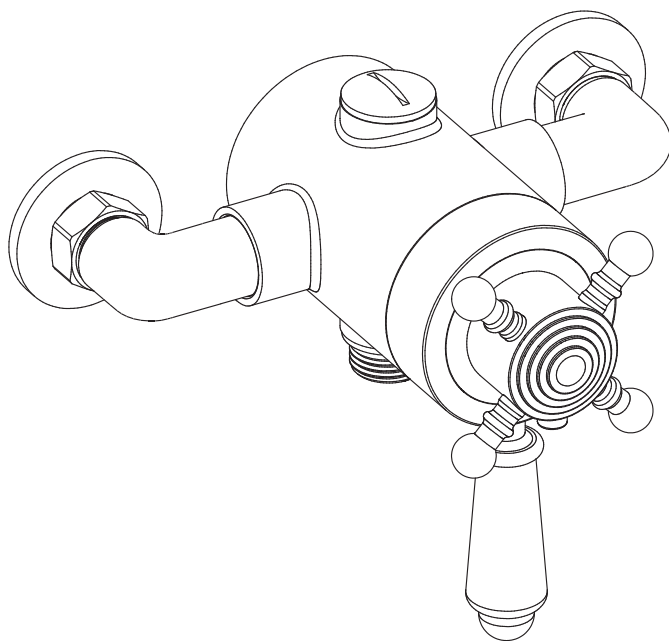


# Installation Manual



Apply for following models

**21037**

Please keep this page for your online registration.

No. FISVTBX03V1.0



# INSTALLATION INSTRUCTIONS

## Important

- We recommend that this product is installed by a qualified professional plumber who is certified by NVQ (National Vocational Qualification) or SNVQ (Scottish National Vocational Qualification) Level 3.
- Please check this product upon delivery to ensure that it has not been damaged and is complete.
- Before installation, please make sure this product is the correct model and you have all the parts required for installation and use.
- If possible the valve should be supplied with hot and cold water at balanced pressure.
- It is important to flush the water system to ensure that no swarf, solder, or any other impurity or foreign body can enter the valve.
- Turn off the water supply before commencing work, this should be done at the isolating valves or inlet feeds if fitted, or otherwise at the main stopcock.
- Please read these instructions carefully and keep them for future reference.

## TECHNICAL DATA

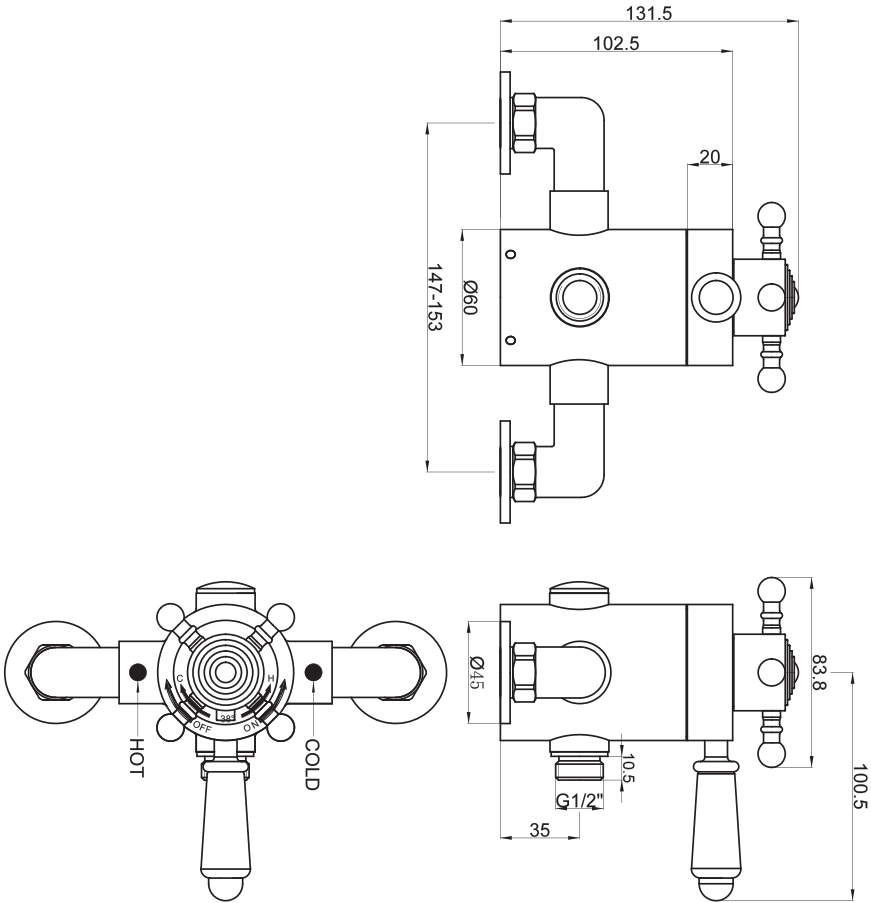
Conditions of use for thermostatic mixing valve.

### Low Pressure

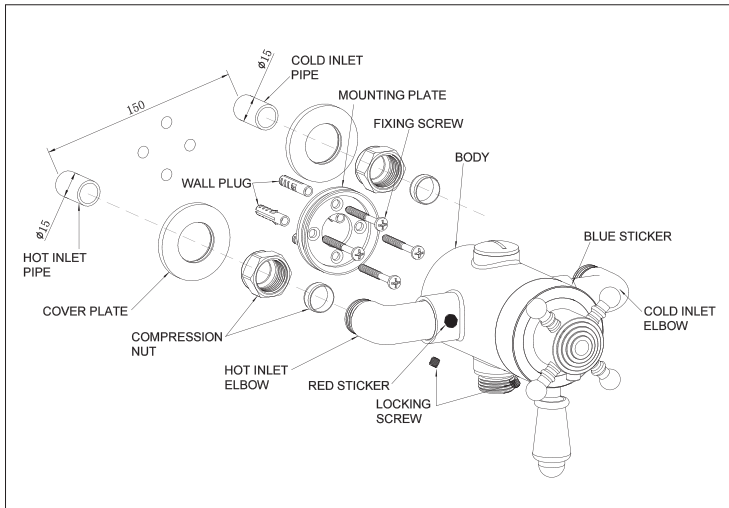
Max static pressure(Bar)	10
Flow Pressure,Hot&Cold(Bar)	0.1-1.0
Hot Supply Temperature(°C)	55-65
Cold Supply Temperature(°C)	Equal to or less than 25

The British Burns Association recommends 37 to 37.5°C as a comfortable bathing temperature for children. In premises covered by the Care Standards Act 2000, the maximum mixed water outlet temperature is 43°C.

# Dimension



# INSTALLATION PROCEDURE

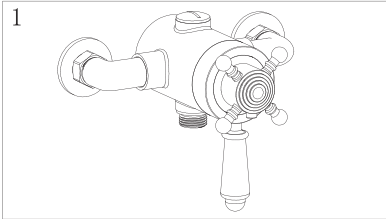


The valve should be installed in accordance with the water bye-laws. For further details refer to the latest copy of Water Bye-laws guide or your local water authority.

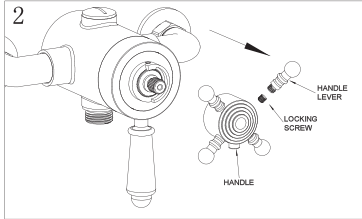
1. Prepare the water supply pipes (hot on the left and cold on the right) at the identified height with a width of 150mm centers.
2. Make the ends of pipes 20-25mm out from the face of wall.
3. Remove the compression nuts and the plates from the inlet elbows of valve.
4. Put the mounting plate onto the wall and mark the position of 4 holes.
5. Drill 4X8mm holes on the wall to a depth of 45mm and insert wall plugs.
6. Place the wallplugs into the holes and fixing screws into the wallplugs, then fix the valve body to the mounting plate with fixing screws.
7. Slide the cover plates under the compression nuts and position each pipe with the cover plate against the wall.
8. Push the valve over each pipe and make them into the mounting plate.
9. Tighten the two nuts on both inlets.

# TEMPERATURE SETTING

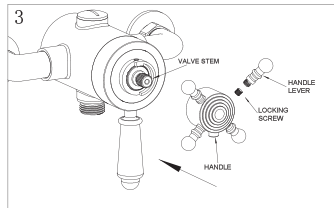
The temperature control handles on this product are factory set and should require no adjustment. However, if for any reason the handles and/or the cartridge is removed, it is important the following procedures are followed.



- 1) Turn flow control handle to maximum flow position, and temperature control handle clockwise until it contacts the internal limit stop.
- 2) Allow the water temperature to stabilize around 3 minutes and check the temperature by thermometer.
- 3) Proceed if temperature is not 38°C.



- 1) Unscrew the handle lever.
- 2) Unscrew the locking screw.
- 3) Take out the handle.



- 1) Turn on the valve.
- 2) Temperature is up when valve stem is turned clockwise, temperature is down when valve stem is turned anti-clockwise.
- 3) When temperature is correctly set, fix the handle back to the valve as show above.
- 4) Tighten the handle lever with locking screw.

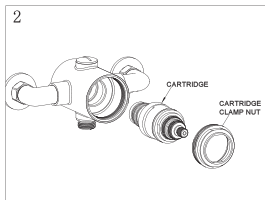
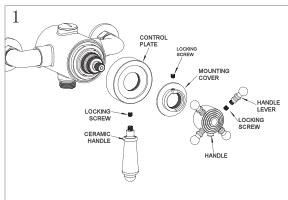
## MAINTENANCE(THERMOSTATIC CARTRIDGE)

\* After a long time usage of thermostatic valve, there will be some waste or debris from the water pipe on and around the thermostatic cartridge, which will affect the flow and sensitivity of automatical temperature adjustment. Please take out the thermostatic cartridge and clean the cartridge strainer

\* To avoid damage, please remove all chrome parts before any maintenance takes place.

- 1) Take off the handle, unscrew the locking screw to take out the mounting cover. Unscrew the ceramic handle to take off the control plate. (See Fig. 1)
- 2) Untighten the cartridge clamp nut to take out the cartridge. (See Fig. 2)
- 3) Wash the cartridge with clean running water, dry and lightly grease the seals (only use silicone grease).
- 4) Replace the cartridge and make sure it back to the primary position.

\* Cartridge Type: " H105 " is the spare part number of thermostatic cartridge.



## TROUBLE SHOOTING

1. Output water temperature does not correspond with temperature set

Cause: Thermostat has not been adjusted to the existing home water system

Remedy: Adjust the thermostat , refer to "Temperature Setting" procedure.

Cause: Hot Water temperature too low.

Remedy: Adjuster the water heater , increase hot water temperature to 65°C

2. Crossflow, cold water being forced into hot water pipe, or vice versa, when valve is closed

Cause: Non-return valves dirty or leaking

Remedy: Clean the non-return valves or remove if necessary

3. Very low flow or no flow

Cause: Supply pressure inadequate

Remedy: Check hot and cold feeds . If a pump has been installed, please check to see if the pump is working. (the valve will shut down if either the cold or hot water supply fails)

4. Water will not run hot enough when first installed

Cause: Wrong maximum temperature setting

Remedy: Adjust the maximum temperature , refer to "Temperature Setting" procedure.

## CLEANING

We do NOT recommend you use any household cleaners to clean the product. The product should only be cleaned with soapy water, rinsing with clean water, and dried with soft cloth.