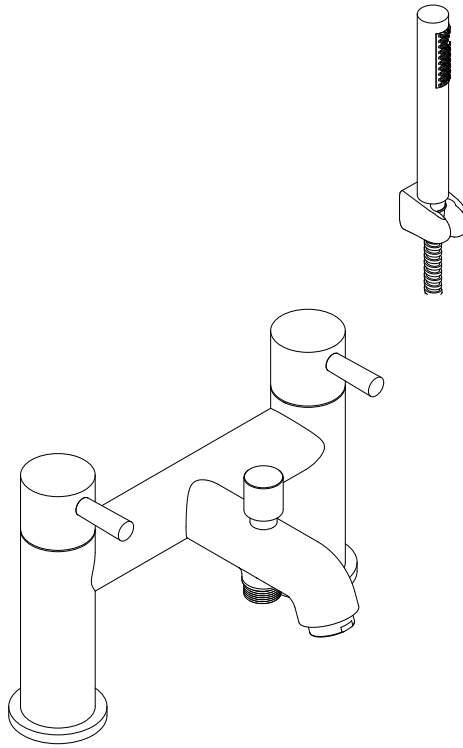


Installation Manual



Please keep this page for your online registration.

FIBTTBL01V1.0



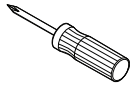
WARNING



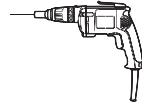
CAUTION

Flush all pipe work through before connecting the tap, debris in the pipe work can block the cartridge and lead to damage.

TOOLS YOU MIGHT NEED



Screwdriver



Electric Drill



Adjustable Wrench

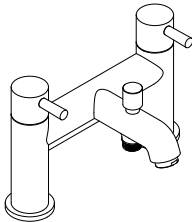


Hexagon wrench

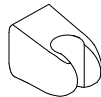


CAUTION

Please check you have all of these items in the box.



Body
X1



Wall Bracket
X1



Handheld Shower
X1



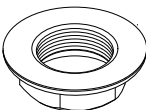
Wall Plug
X2



Screw
X2



Shower Hose
X1



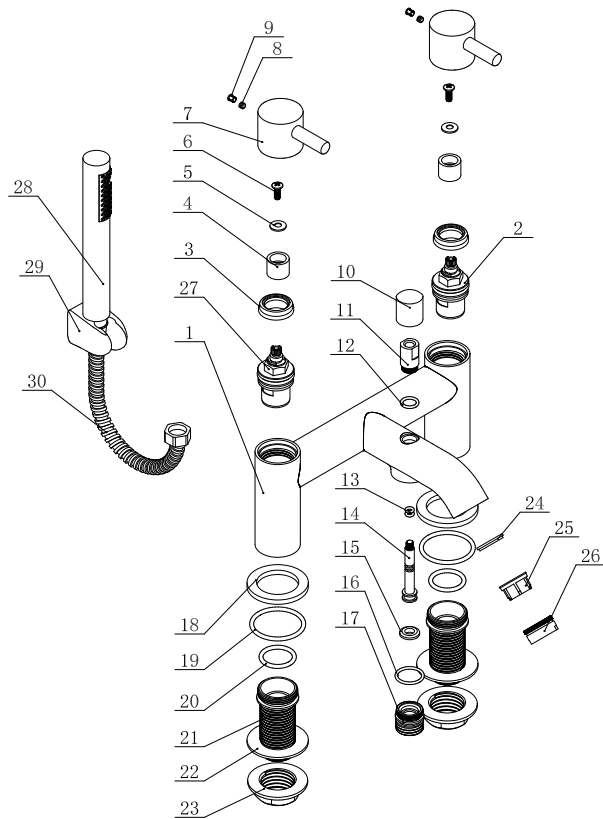
Nut
X2



Washer
X2



Base plate
X2



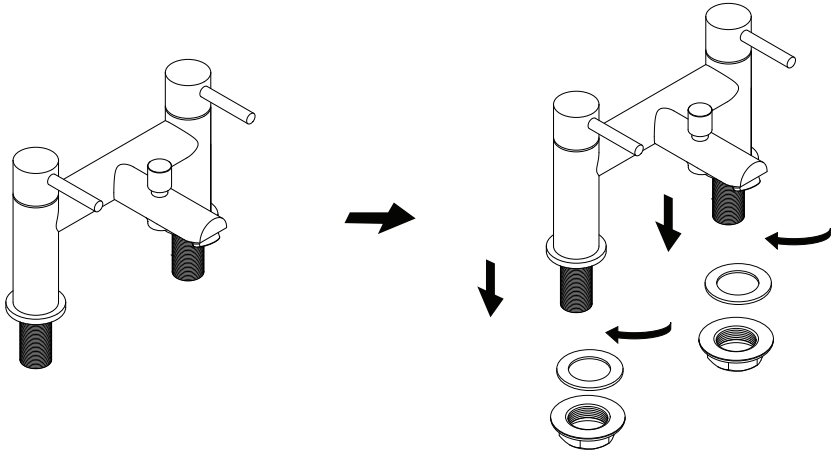
PART LIST

1	BODY	16	O RING
2	3/4 HEADWORK	17	SCREW
3	COVER	18	BASE
4	HANDLE CORE	19	O RING
5	METAL WASHER	20	O RING
6	BOLT	21	FIXING AND WATER INLET TUBE
7	HANDLE BODY	22	GASKET
8	BOLT	23	3/4 HEX NUT
9	COVER CAP	24	WASHER
10	DIVERTER CAP	25	AERATOR
11	DIVERTER HOUSE	26	HOUSE
12	O RING	27	3/4 HEADWORK
13	O RING	28	HANDSHOWER
14	SPINDLE	29	BRACKET
15	WASHER	30	PVC HOSE

INSTALLATION PROCEDURE

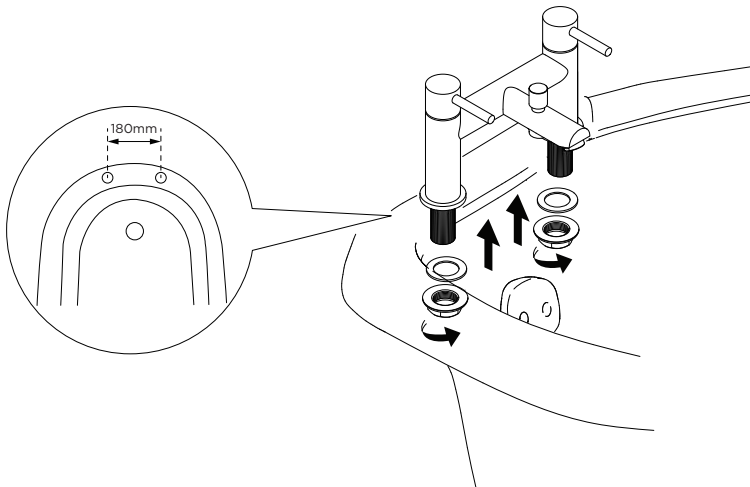
1

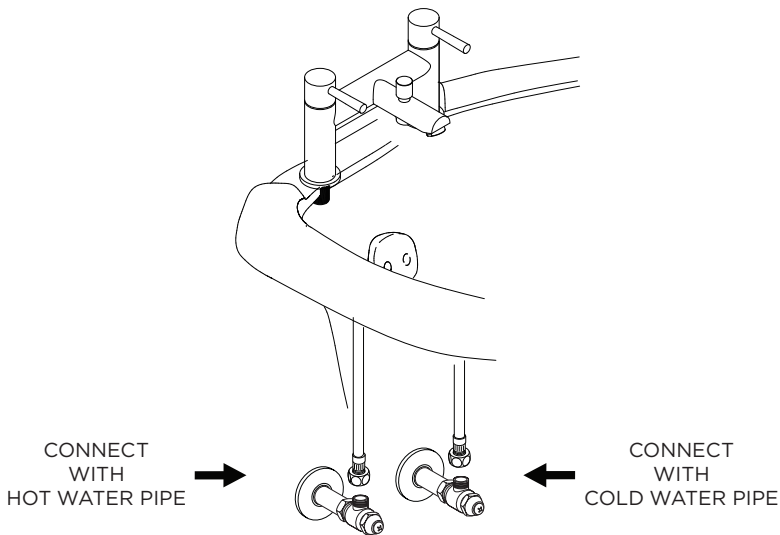
Remove the plastic backnut and washers from the water inlets.



2

Carefully assembly fitting on to the bath, ensuring the rubber washer or rubber cushions are in the place at the base of the fitting. Tighten the backnuts, ensuring equal torque is applied to both nuts.





AFTER INSTALLATION

Ensure that all connections are tight. Ensure that the handle is in the off position. Turn on the drain and main water supply, and check for leaks. Repair as needed.

CARE & CLEANING

Your new tap is designed for years of trouble-free performance. Keep it looking new by cleaning it periodically with mild soap, rinse thoroughly with warm water and dry with a clean, soft cloth. Do not use abrasive cleaners, steel wool or harsh chemicals, as these will dull the finish. Failure to follow these instructions may void your warranty.

TROUBLE SHOOTING

If you've followed the instructions carefully and your tap still does not work properly, take these corrective steps.

Problem	Possible Cause	Solution
Insufficient water	- Aerator clogged	- Clean aerator, replace if necessary
Mixer stiff	- Cartridge defective	- Replace cartridge
Mixer dripping	- Cartridge defective	- Replace cartridge
Water leaks below handle	- Cartridge defective	- Replace cartridge
	- O-ring/rings defective	- Replace O-ring/rings
Water leaks at the connection	- Loose connection	- Tighten connection