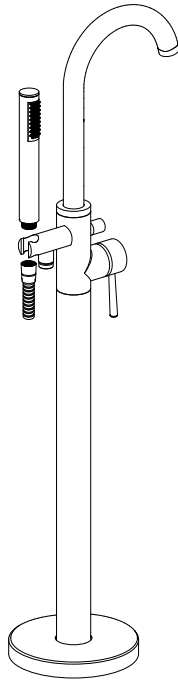


# Installation Manual



Please keep this page for your online registration.

FIBTTBL04V1.0



## WARNING

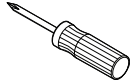


CAUTION

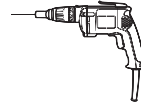
Flush all pipe work through before connecting the tap, debris in the pipe work can block the cartridge and lead to damage.

## TOOLS

YOU MIGHT NEED



Screwdriver



Electric Drill



Adjustable Wrench

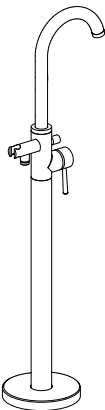


Hexagon wrench



CAUTION

**Please check you have all of these items in the box.**



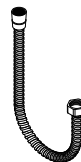
Body  
**X1**



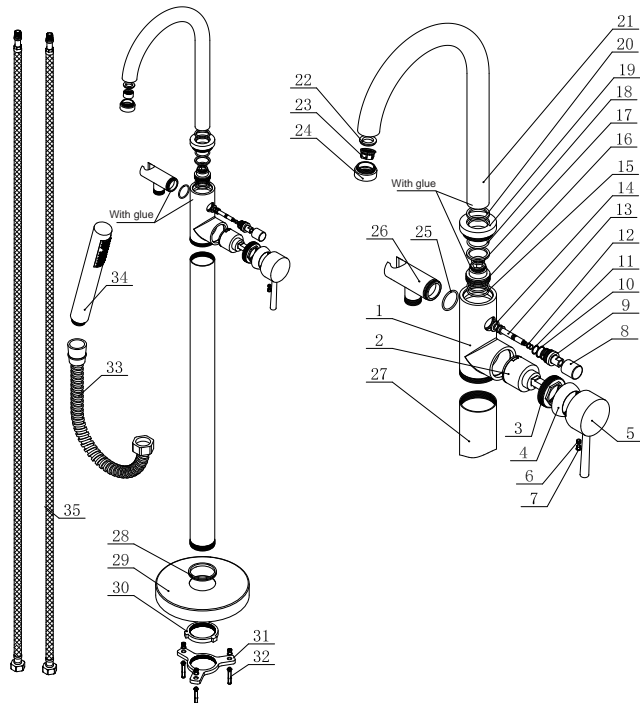
BOLT&NUT  
**X3**



Handheld Shower  
**X1**



Shower Hose  
**X1**



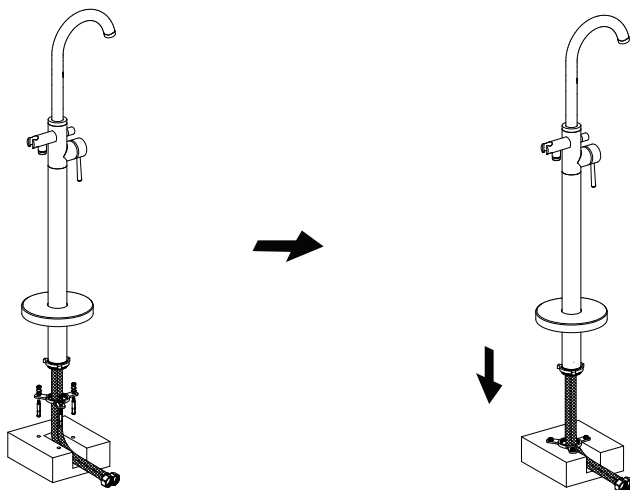
## PART LIST

1	BODY	19	CAP
2	CARTRIDGE	20	GASKET
3	PRESSING CAP	21	SPOUT
4	PRESSING CAP COVER	22	WASHER
5	HANDLE	23	AERATOR
6	BOLT	24	HOUSE
7	COVER CAP	25	O RING
8	DIVERTER CAP	26	HOLDER
9	DIVERTER HOUSE	27	TUBE
10	O RING	28	RING
11	O RING	29	BASE
12	O RING	30	LOCKING NUT
13	SPINDLE	31	TRAIANGLE BASE
14	WASHER	32	BOLT
15	O RING	33	SS HOUSE
16	CONNECTOR	34	HANDSHOWER
17	O RING	35	TAILS
18	O RING		

## INSTALLATION PROCEDURE

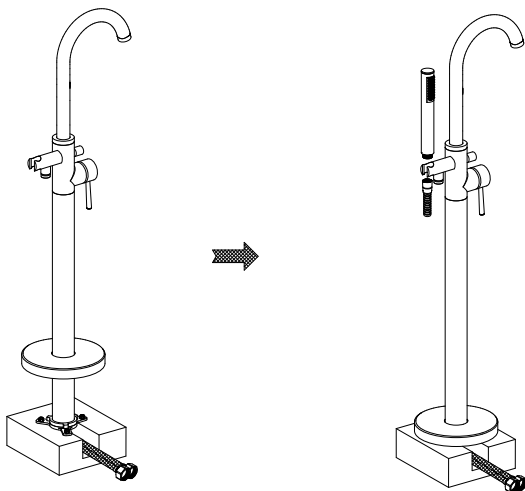
**1**

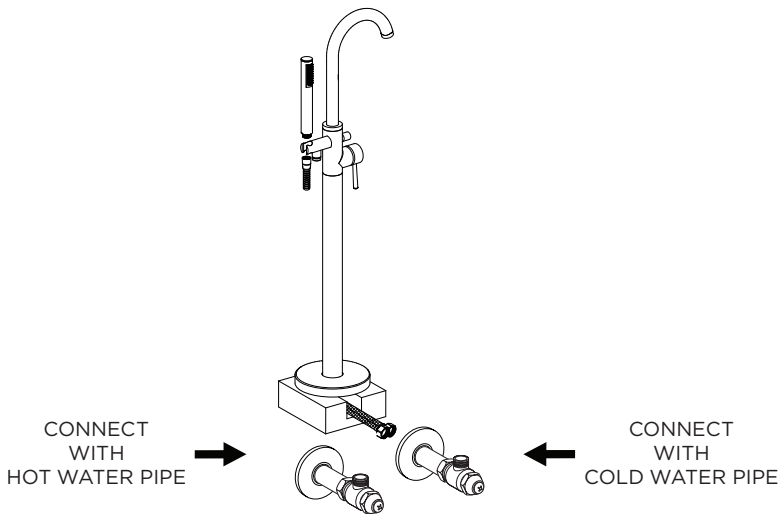
Drill three holes to assemble the base.



**2**

Put the base into cover the plate.





## AFTER INSTALLATION

Ensure that all connections are tight. Ensure that the handle is in the off position. Turn on the drain and main water supply, and check for leaks. Repair as needed.

## CARE & CLEANING

Your new tap is designed for years of trouble-free performance. Keep it looking new by cleaning it periodically with mild soap, rinse thoroughly with warm water and dry with a clean, soft cloth. Do not use abrasive cleaners, steel wool or harsh chemicals, as these will dull the finish. Failure to follow these instructions may void your warranty.

## TROUBLE SHOOTING

If you've followed the instructions carefully and your tap still does not work properly, take these corrective steps.

Problem	Possible Cause	Solution
Insufficient water	- Aerator clogged	- Clean aerator, replace if necessary
Mixer stiff	- Cartridge defective	- Replace cartridge
Mixer dripping	- Cartridge defective	- Replace cartridge
Water leaks below handle	- Cartridge defective	- Replace cartridge
	- O-ring/rings defective	- Replace O-ring/rings
Water leaks at the connection	- Loose connection	- Tighten connection