



TREPANEL

WATERPROOF PANEL SOLUTIONS



TREPANEL

WATERPROOF PANEL SOLUTIONS

AQUA



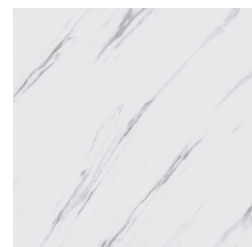
For a fresh, durable and practical option, Trepanel Aqua® brings you our new PVC wall panels! Perfect for your bathroom design, this range offers a variety of designs and accessories to perfectly complement your personal style.

We're here to walk you through everything you need to know to install Trepanel Aqua® PVC Bathroom Wall Panels to ensure a seamless, classy overall finish. Here's how to install shower panels using Trepanel®!

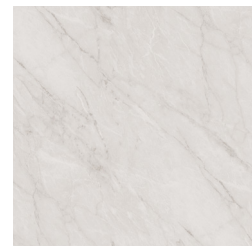
Installing Trepanel Aqua® Using Adhesive

You will need:

- Trepanel Aqua® PVC panels
- Mapei Super Grip Panel Adhesive
- Tape measure
- Straight edge
- Gloves and eye-protection
- Fine tooth saw and or utility knife
- Tanking System / Waterproof Membrane
- Silicone Sealant
- Anti-bac cleaner



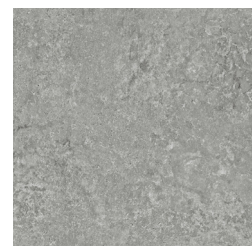
CARRARA MARBLE
GLOSS / MATT



LIGHT GREY MARBLE
GLOSS



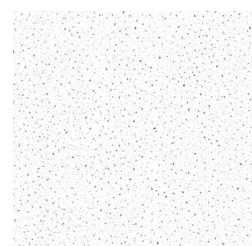
DARK GREY MARBLE
GLOSS / MATT



CONCRETE GREY
MATT



TRAVERTINE IVORY
GLOSS / MATT



WHITE SPARKLE QUARTZ
SATIN



METALLIC BRONZE
MATT

Step 1 - Prepare your Wall

Before beginning any installation process, ensure your surface is appropriate. For best results, you may also need to fill in any cracks or imperfections in the wall.

Ensure Stability

The background should not flex or move. Any movement can cause the panels to detach or cause leaks. If your surface is uneven, install an appropriate timber batten frame beforehand.

Surface Smoothness

The surface should be level and smooth to ensure good adhesion and a neat finish.

Cleanliness

Remove any dust, dirt, grease, or other contaminants that might prevent proper adhesion of the panels.

Ensure the background is completely dry before installing the PVC panels to avoid trapping moisture, which can lead to mould or other issues.

Know your substrate...

Plasterboard (Water-resistant)

Use moisture-resistant or water-resistant plasterboard (often green in colour). Ensure the plasterboard is securely fixed to the wall studs. - Joints and screw heads should be sealed and made smooth.

Cement Backer Board

Cement backer board is highly recommended for wet areas as it is moisture-resistant. Ensure it is properly secured and joints are taped and sealed with a waterproofing membrane.

Concrete or Masonry

The surface should be clean, dry, and free from dust, oil, or other contaminants. Repair any cracks or holes with appropriate filler and ensure the surface is even.

Existing Tiling

If installing over existing tiles, ensure they are securely fixed, clean, and degreased. Any loose or damaged tiles should be repaired or removed, and the gaps filled.

Plywood (Marine Grade)

Marine-grade plywood can be used due to its resistance to moisture. It should be securely fixed and sealed to prevent water ingress.

Waterproof Membrane

Regardless of the substrate, applying a waterproofing membrane or tanking system is highly recommended, especially in wet areas. This adds an extra layer of protection against water ingress.

Step 2 - Tanking Your Bathroom Wall

We recommend using either a tanking system or a waterproof membrane that is specifically designed for use in wet areas.

Common choices for this include both sheet membranes, liquid-applied membranes or waterproof boards.

We recommend our [Mapei Shower Waterproofing Kit](#)





Trepanel Aqua® PVC shower panels offer numerous benefits for bathroom installations, making them a popular choice among homeowners. These panels are inherently waterproof, ensuring protection against water seepage and reducing the risk of mold and mildew growth.

Additionally, PVC panels are lightweight, offer good thermal and sound insulation, and many are recyclable, making them an eco-friendly choice. Their smooth, non-porous surface contributes to a more hygienic environment by preventing bacteria and mold buildup.

3 - Apply the Membrane

Following the manufacturer's guide, apply your tanking system kit to the surface. This is typically done with a brush, roller or trowel. Focus on corners, joints, seams and any other tricky to reach areas.

To avoid leaks, seal around pipes, fixtures and any other penetrations in the surface using a compatible waterproof silicone sealant. If you're using a sheet membrane to waterproof the space, ensure you overlap the joints to create a continuous barrier.

As per the recommended time from the manufacturer's guide, allow your membrane to dry completely. Conduct a water test to ensure there are no leaks before you get started on applying your Trepanel Aqua® Panels.

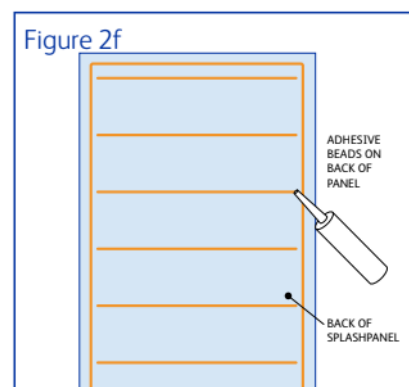
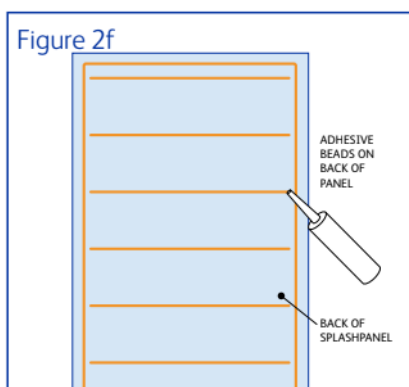
4 - Installation of Panels and Profiles

Trepanel Aqua® PVC Panels can be adhered directly onto a flat, plumb, sound and smooth wall.

If you are starting your application on exposed edges, ensure you install the end cap beforehand. This can be done by screwing the piece into the wall/batten or adhering using a waterproof adhesive, we recommend the Mapei Super Grip Panel Adhesive.

You will then need to apply a full-length unbroken bead of silicone sealant into the channel of the starting point.

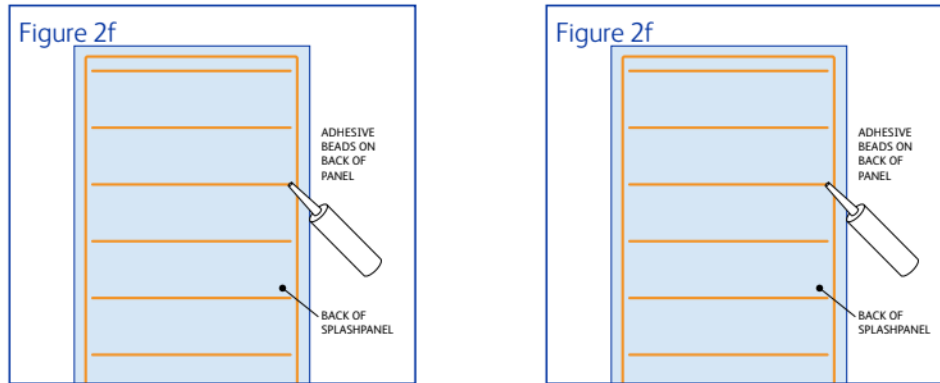
When you come to apply your first panel, on the reverse, apply a thick bead of adhesive around the edge of the panel (approx 50mm in from the edge), followed by further horizontal lines of adhesive spaced approximately 450mm apart.



Angle the panel into the end cap you previously installed and firmly press the rest of the panel into the wall, ensuring all of the adhesive is making contact with the wall. If you are using a wooden batten system, apply the adhesive to the battens rather than the panel.

Repeat the adhesive lines on your next panel/battens, adding a small bead of silicone along the upper section of the tongue on the next panel. Insert the tongue of the panel into the groove of the previous one. Wipe off any excess silicone immediately.

In some cases, it may be necessary to cut off the panel's tongue or groove before fitting the panel into any profiles used. Follow step 6 to do this. If this is the case, use a H joint to attach the two edges. H joints can also be used for attaching multiple panels together, this creates a seamless, additional waterproofing and structurally stable installation.



When you get to a corner, use either the internal or external corner joint to seamlessly join the two edges. Apply a full silicone bead into the trim recess prior to fixing the panel in place.

5 - Silicone your Edges

Ensure all panel joints, bottom edges, sides and edges around sinks, baths, shower trays, shower units and any pipes or cut-outs are fully sealed using PVC silicone sealant.

Your warranty may be void if problems occur due to incorrect or inappropriate sealing of joints.

6 - Cutting & Handling your Panels

Trepanel Aqua® Shower Panels should be carefully cut using a fine-tooth saw, decorative face up. Measure the piece you need to cut, and rest it on a stable, flat surface. Saw the piece off the panel.

We recommend wearing gloves and eye protection when doing this to minimise the risk of injury. The production process of all PVC panels, not just Trepanel, is made using a transfer printing process. The surface is not suitable for adhesive tapes as the adhesive on the tape contains chemical substances which can cause damage to the panels, particularly to matt surface panels.

7 - Cleaning

To clean your Trepanel Aqua® Shower Panels, we advise a soft cloth with warm, soapy water (or non-abrasive anti-bacterial spray). Do not use strong acids to clean your waterproof panels, as this may damage the design.

TREPANEL

WATERPROOF PANEL SOLUTIONS



Why choose Trepanel Aqua® Shower Panels?

Their durability allows them to withstand impacts, scratches, and general wear and tear, maintaining their appearance and functionality over time. Installation is relatively easy and quick compared to traditional tiling, resulting in reduced labor time and costs. PVC panels are also low maintenance, requiring only simple household cleaners for upkeep and eliminating the need for grout, which can stain and be difficult to clean. They are cost-effective, more affordable than ceramic tiles or other traditional materials, and come in a wide range of colors, patterns, and finishes, including designs that mimic natural stone, wood, or tile. This variety allows for great flexibility in bathroom design.